



# RESIDENTIAL SYSTEMS

---

BASEMENTS & LIVING AREAS • GARAGES  
POOL DECKS • PORCHES, PATIOS & WALKWAYS





# BASEMENTS & LIVING AREAS

## SIMFLOOR METALLIC METALLIC PIGMENT

Homeowners looking for a carpet alternative want a decorative option that is easy to clean. **SIMFLOOR METALLIC** accents a home's décor by featuring **Metallic Additive**. With over two dozen color options, you can certainly find one that highlights any color palette or design a unique floor with multiple pigments and is more of a work of art. Texture from the satin topcoat provides long-lasting appearance and traction for an area that sees a variety of family footwear, socks, and bare feet. It also resists stains from most household chemicals.

### SYSTEM ATTRIBUTES



**DURABLE:**  
40 mg loss



**ADHESION:**  
> 400 psi



**COEFFICIENT OF FRICTION:**  
> .05



**COMPRESSIVE STRENGTH:**  
> 11,600 psi



**ELONGATION:**  
5 - 10%



**FLAMMABILITY:**  
Self-extinguishing on concrete



**FLEXIBILITY 1/8" BEND MANDREL:**  
PASS



**FLEXURAL STRENGTH:**  
> 12,800 psi



**GLOSS:**  
88°



**HARDNESS:**  
Shore D: > 75

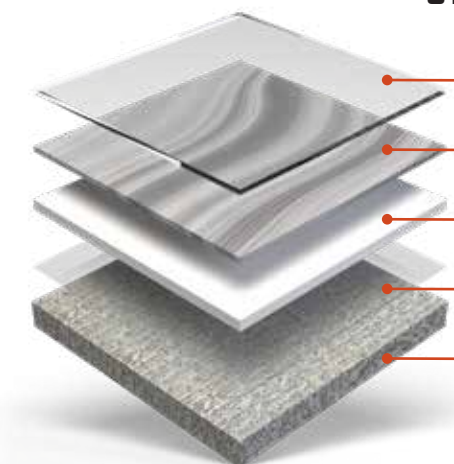


**TENSILE STRENGTH:**  
9,600 psi



**UV RESISTANT**

### SYSTEM BUILD



**TOPCOAT:**  
971EPS HIGH SOLIDS EPOXY SILOXANE, SATIN, CLEAR

**METALLIC ADDITIVE:**  
1100SL SLOW CURE W/METALLIC ADDITIVE

**BASECOAT:**  
1100SL 100% SOLIDS EPOXY, PIGMENTED

**PRIMER:**  
1000HS OR ANY SIMIRON EPOXY PRIMER, CLEAR

**PREPARED SUBSTRATE:**  
CSP 3+

### COLOR SELECTIONS

To view all color selections refer to the **Simiron Product Color Guide**.



# GARAGES

## SIMFLAKE SB DECORATIVE CHIP

More families are utilizing garage space as an extension of the home. **SIMFLAKE SB** is a single-broadcast floor system that utilizes **Simiron Decorative Chip**. There are a variety of blends to go with all cabinet and garage interiors. The 60 mil system thickness provides a sound base for cars and resists UV damage when the large door is open. This system has a gloss finish, but optional satin and non-skid texture are available to minimize slip on wet floors.

### SYSTEM ATTRIBUTES



**DURABLE:**  
30 mg loss



**ADHESION:**  
> 400 psi



**COEFFICIENT OF FRICTION:**  
> .55



**COMPRESSIVE STRENGTH:**  
11,600 psi



**ELONGATION:**  
5 - 10%



**FLAMMABILITY:**  
Self-extinguishing on concrete



**FLEXIBILITY 1/8" BEND MANDREL:**  
PASS



**FLEXURAL STRENGTH:**  
12,800 psi



**GLOSS:**  
92 - 95°



**HARDNESS:**  
Shore D > 70, 86

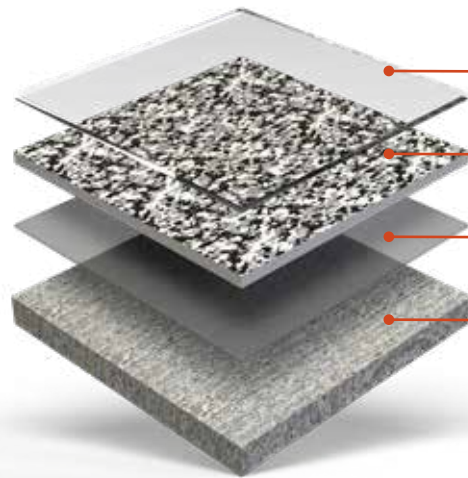


**TENSILE STRENGTH:**  
> 9,600 psi



**UV RESISTANT**

### SYSTEM BUILD



**TOPCOAT:**  
POLYASPARTIC HS, GLOSS, CLEAR

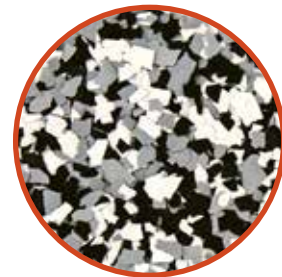
**BASECOAT/BROADCAST:**  
1100SL 100% SOLIDS EPOXY, PIGMENTED & DECORATIVE CHIP

**PRIMER:**  
1000HS OR ANY SIMIRON EPOXY PRIMER, CLEAR

**PREPARED SUBSTRATE:**  
CSP 3+

### COLOR SELECTIONS

To view all color selections refer to the [Simiron Product Color Guide](#).



## SIMFLAKE SB/UV 1-DAY POLYASPARTIC DECORATIVE CHIP

**SIMFLAKE SB/UV 1-DAY POLYASPARTIC** is a single-broadcast floor system with texture that utilizes **Simiron Decorative Chip** in a variety of blends to go with any house/trim combination. The featured system has a gloss finish, but optional satin and non-skid texture are available to reduce slip on wet decks. The base and topcoat are UV resistant for constant exposure. *\*This system is suitable for exterior spaces in warmer climates.*

### SYSTEM ATTRIBUTES



**DURABLE:**  
30 mg loss



**ADHESION:**  
> 400 psi



**COEFFICIENT OF FRICTION:**  
> .65



**ELONGATION:**  
5 - 10%



**FLAMMABILITY:**  
Self-extinguishing on concrete



**FLEXIBILITY 1/8" BEND MANDREL:**  
PASS



**GLOSS:**  
92 - 95°



**HARDNESS:**  
Shore D > 70, 86



**SLIP RESISTANT**



**TABER ABRASION:**  
30 mg loss

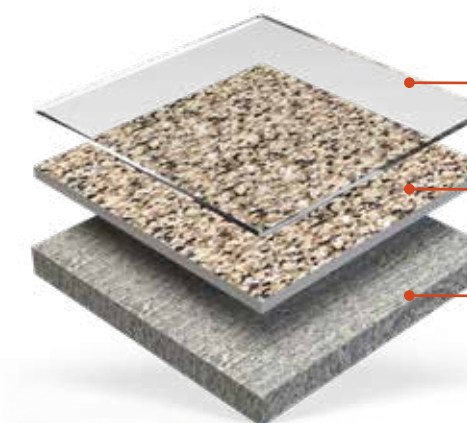


**TENSILE STRENGTH:**  
4,000 psi



**UV RESISTANT**

### SYSTEM BUILD

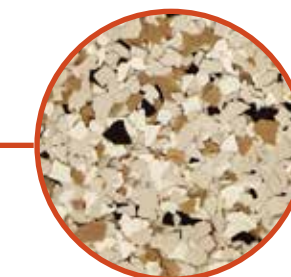


**TOPCOAT:**  
POLYASPARTIC HS, GLOSS, CLEAR

**BASECOAT/BROADCAST:**  
POLYASPARTIC HS, PIGMENTED & DECORATIVE CHIP

**PREPARED SUBSTRATE:**  
CSP 3+

### COLOR SELECTIONS



To view all color selections refer to the **Simiron Product Color Guide**.

# PORCHES, PATIOS & WALKWAYS

## SIMFLAKE SB/UV 1-DAY POLYASPARTIC DECORATIVE CHIP

**SIMFLAKE SB/UV 1-DAY POLYASPARTIC** is a versatile system, consisting of a basecoat, 1/8" vinyl chip broadcast, and topcoat. The same system that is used around pools can be used to cover other areas around the home with something more decorative in climates that do not freeze. This system is available in a wide range of blended colors to compliment homes and landscapes. The base system has a gloss finish, but optional satin and non-skid texture are available to reduce slip on exterior walking surfaces that may be wet. *\*This system is suitable for exterior spaces in warmer climates.*

### SYSTEM ATTRIBUTES



**DURABLE:**  
30 mg loss



**ADHESION:**  
> 400 psi



**COEFFICIENT OF FRICTION:**  
> .65



**ELONGATION:**  
5 - 10%



**FLAMMABILITY:**  
Self-extinguishing on concrete



**FLEXIBILITY 1/8" BEND MANDREL:**  
PASS



**GLOSS:**  
92 - 95°



**HARDNESS:**  
Shore D > 70, 86



**SLIP RESISTANT**



**TABER ABRASION:**  
30 mg loss

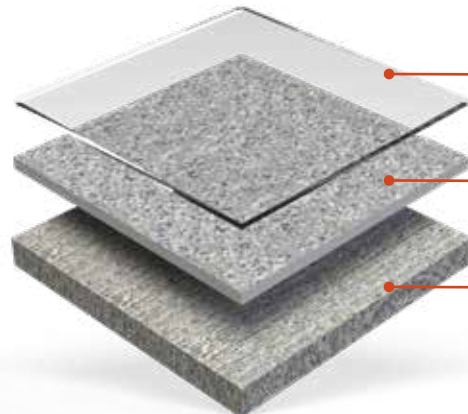


**TENSILE STRENGTH:**  
4,000 psi



**UV RESISTANT**

### SYSTEM BUILD



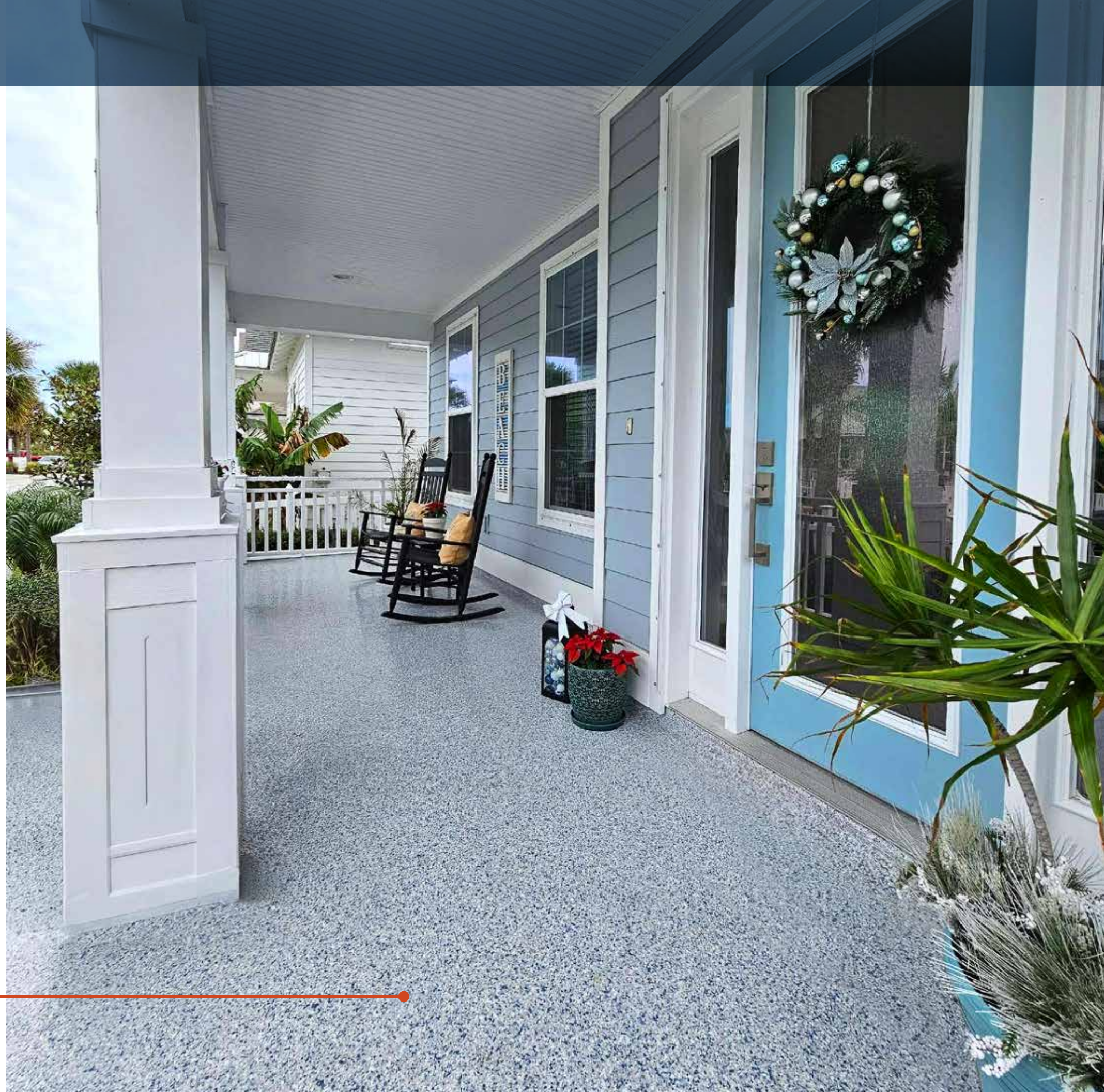
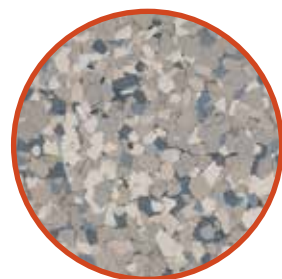
**TOPCOAT:**  
POLYASPARTIC HS, GLOSS, CLEAR

**BASECOAT/BROADCAST:**  
POLYASPARTIC HS, PIGMENTED & DECORATIVE CHIP

**PREPARED SUBSTRATE:**  
CSP 3+

### COLOR SELECTIONS

To view all color selections refer to the [Simiron Product Color Guide](#).



# CHEMICAL RESISTANCE CHART

SIMIRON SYSTEMS	SIMFLAKE SB	SIMFLAKE SB 1-DAY	SIMFLOOR HB-EPOXY	SIMFLOOR HWU	SIMFLOOR ESD	SIMFLOOR EPOXY SILOXANE	SHOP FLOOR
CHEMICAL	RESULTS	RESULTS	RESULTS	RESULTS	RESULTS	RESULTS	RESULTS
10% Acetic Acid	G	G	G	F	F	E	G
Vinegar	G	G	G	G	G	G	G
10% Citric Acid	G	G	G	G	G	G	G
10% Hydrochloric Acid	G	G	G	E	E	E	G
30% Hydrochloric Acid (muriatic)	G	G	G	E	E	E	G
10% Nitric Acid	NR	NR	G*	G	G	G	NR
50% Phosphoric Acid	F	F	F	G	G	G	F
10% Sulfuric Acid	F	F	G	F	F	G	F
37% Sulfuric Acid	F	F	F	F	F	G	F
70% Sulfuric Acid	F	F	F	F	F	G*	F
20% Ammonium Nitrate	E	E	E	E	E	E	E
20% Sodium Chloride	E	E	E	E	E	E	E
50% Sodium Hydroxide	G	G	E	E	E	E	G
Methyl Ethyl Ketone	E	E	G	E	E	E	E
Xylene	E	E	F	E	E	E	E
Ethylene Glycol	E	E	G	E	E	E	E
Isopropyl Alcohol	E	E	F	E	E	E	E
Mineral Spirits	F	F	E	E	E	E	F
Brake Fluid	E	E	F	G	G	G	E
Transmission Fluid	E	E	E	E	E	E	E
Motor Oil	E	E	E	E	E	E	E
50:1 Gas/Oil Mixture	E	E	E	E	E	E	E
E85 Gasoline	E	E	E	E	E	E	E
E95 Gasoline	E	E	E	E	E	E	E
Unleaded Gasoline	E	E	G	E	E	E	E
Skydrol	E	E	E	E	E	E	E
Betadine	E	E	G*	G*	G*	G*	E
Bleach	E	E	E	E	E	E	E
Urine	E	E	E	E	E	E	E
Coffee	E	E	E	E	E	E	E
Cola	E	E	E	E	E	E	E
Ketchup	E	E	G	F	F	E	E
Mustard	G*	G*	G	G	G	G*	G*
Red Wine	E	E	E	E	E	E	E

\*Stain is only defect.

SIMIRON SYSTEMS	SIMCRETE SL	SIMCRETE SL FLAKE	SIMCRETE SL QUARTZ	SIMQUARTZ DB	SIMCRETE SL+TC	SIMFLOOR METALLIC
CHEMICAL	RESULTS	RESULTS	RESULTS	RESULTS	RESULTS	RESULTS
10% Acetic Acid	G	G	G	F	E	E
Vinegar	G	G	G	F	E	G
10% Citric Acid	G	G	G	E	E	G
10% Hydrochloric Acid	G	G	G	E	E	E
30% Hydrochloric Acid (muriatic)	G	G	G	E	E	E
10% Nitric Acid	NR	NR	NR	NR	G	G
50% Phosphoric Acid	F	F	F	NR	G	G
10% Sulfuric Acid	F	F	F	E	G	G
37% Sulfuric Acid	F	F	F	G	F	G
70% Sulfuric Acid	F	F	F	NR	NR	G*
20% Ammonium Nitrate	E	E	E	E	E	E
20% Sodium Chloride	E	E	E	E	E	E
50% Sodium Hydroxide	G	G	G	G	E	E
Methyl Ethyl Ketone	E	E	E	E	F	E
Xylene	E	E	E	E	E	E
Ethylene Glycol	E	E	E	E	E	E
Isopropyl Alcohol	E	E	E	E	E	E
Mineral Spirits	F	F	F	E	E	E
Brake Fluid	E	E	E	G	E	G
Transmission Fluid	E	E	E	E	E	E
Motor Oil	E	E	E	E	E	E
50:1 Gas/Oil Mixture	E	E	E	E	E	E
E85 Gasoline	E	E	E	E	E	E
E95 Gasoline	E	E	E	E	E	E
Unleaded Gasoline	E	E	E	E	E	E
Skydrol	E	E	E	E	E	E
Betadine	E	E	E	G*	E	G*
Bleach	E	E	E	E	E	E
Urine	E	E	E	E	E	E
Coffee	E	E	E	E	E	E
Cola	E	E	E	E	E	E
Ketchup	E	E	E	F	E	E
Mustard	G*	G*	G*	G	E	G*
Red Wine	E	E	E	E	E	E

\*Stain is only defect.

KEY

E = Excellent

G = Good

F = Fair

NR = Not Recommend



[SIMIRON.COM](http://SIMIRON.COM) | [SHOP.SIMIRON.COM](http://SHOP.SIMIRON.COM)



**SIMIRON INC.**  
**CORPORATE HEADQUARTERS**  
3000 Research Drive  
Rochester Hills, MI 48309  
(248) 686-3600

**MADE IN THE USA**

