



# GROCERY & RETAIL SYSTEMS

---

FOOD PREPARATION • RETAIL BOUTIQUES  
RETAIL STORES • WAREHOUSES
















# FOOD PREPARATION

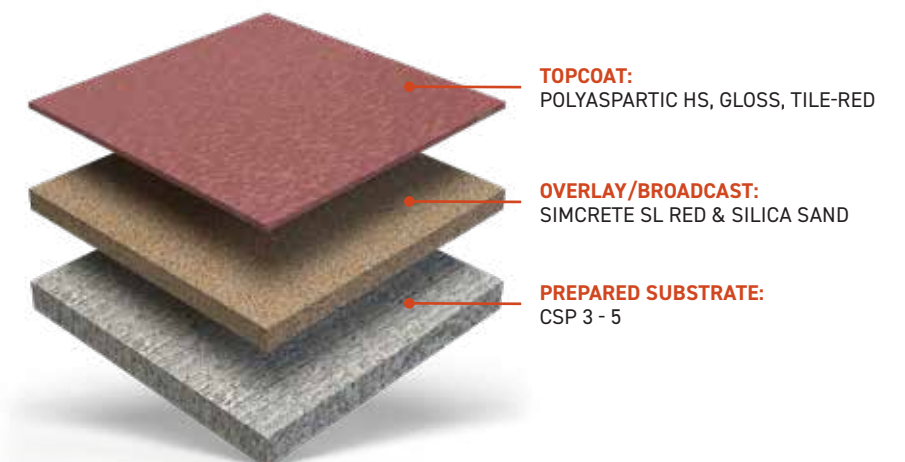
## SIMCRETE SL URETHANE CEMENT

Workers that prepare food need slip-resistant floors that are durable. **SIMCRETE SL** is a self-leveling urethane cement broadcast to rejection with silica sand to achieve a 3/16" system with slip-resistant texture that will hold up to regular washdowns. It will withstand damage from dropped cooking equipment and thermal shock under ovens and from oil splatter. A polyaspartic is used to lock in the broadcast, which provides resistance to chemicals used to clean in kitchen applications.

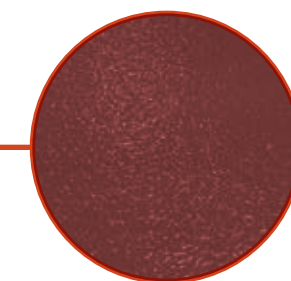
### SYSTEM ATTRIBUTES

 <b>BOND STRENGTH:</b> 100% Concrete Failure	 <b>COEFFICIENT OF FRICTION:</b> > 0.63	 <b>COMPRESSIVE STRENGTH:</b> 8,558 psi	 <b>FLAMMABILITY:</b> Self-extinguishing on concrete	 <b>FLEXURAL STRENGTH:</b> 2,780 psi	 <b>GLOSS:</b> 92 - 95
 <b>IMPACT STRENGTH:</b> > 160 lbs/inch	 <b>RESISTANCE TO FUNGI GROWTH:</b> PASS	 <b>TABER ABRASION:</b> 30 mg loss	 <b>TENSILE STRENGTH:</b> 1,120 psi	 <b>UV RESISTANT</b>	

### SYSTEM BUILD



### COLOR SELECTIONS



To view all color selections refer to the **Simiron Product Color Guide**.

# RETAIL BOUTIQUES

## SIMFLOOR METALLIC METALLIC PIGMENT

Are you ready to make a change from standard store flooring to something more interesting? **SIMIRON SIMFLOOR METALLIC** creates a beautiful three-dimensional appearance that gives the illusion of waves, swirls and ripples. The finished appearance is pearlescent and iridescent and can vary from gradual, subtle changes in color to more pronounced effects. The epoxy siloxane topcoat has a satin finish with minor texture that will hold up to constant customer and clerk movement while still being easy to clean.

### SYSTEM ATTRIBUTES



**ADHESION:**  
> 400 psi



**COEFFICIENT OF FRICTION:**  
> .05



**COMPRESSIVE STRENGTH:**  
> 11,600 psi



**ELONGATION:**  
5 - 10%



**FLAMMABILITY:**  
Self-extinguishing on concrete



**FLEXIBILITY 1/8" BEND MANDREL:**  
PASS



**FLEXURAL STRENGTH:**  
> 12,800 psi



**GLOSS:**  
88°



**HARDNESS:**  
Shore D: > 75



**TABER ABRASION:**  
40 mg loss

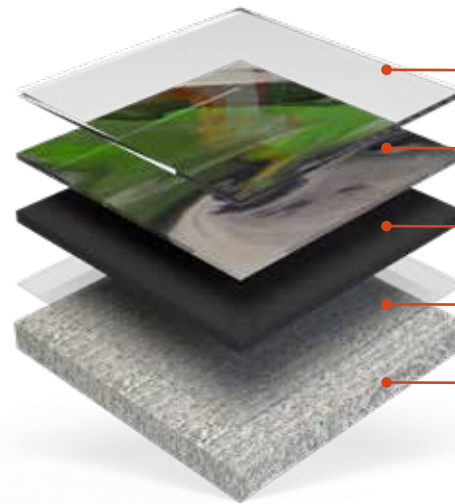


**TENSILE STRENGTH:**  
9,600 psi



**UV RESISTANT**

### SYSTEM BUILD



**TOPCOAT:**  
971EPS HIGH SOLIDS EPOXY SILOXANE, SATIN

**METALLIC ADDITIVE:**  
1100SL SLOW CURE W/METALLIC ADDITIVE

**BASECOAT:**  
1100SL 100% SOLIDS EPOXY W/U-TINT PIGMENT PACK

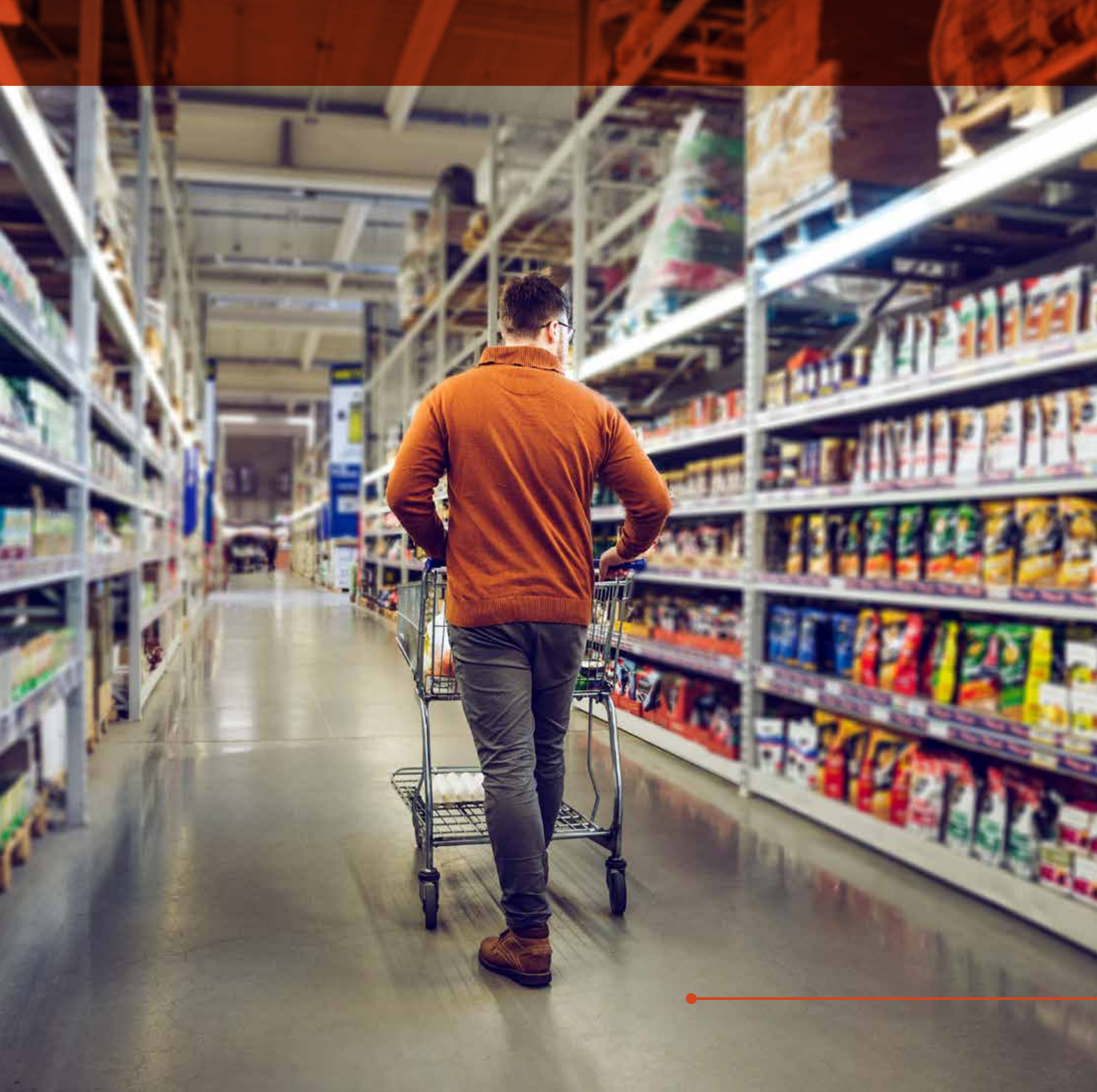
**PRIMER:**  
1000HS OR ANY SIMIRON EPOXY PRIMER, CLEAR

**PREPARED SUBSTRATE:**  
CSP 3+

### COLOR SELECTIONS

To view all color selections refer to the [Simiron Product Color Guide](#).





# RETAIL STORES

## POLISHED CONCRETE

Floors are abused in grocery stores and big-big box retail. Heavy carts with small wheels that carry dirt and debris picked up outdoors are pushed across the floor. Permanent polymer flooring is challenging in these areas. If it manages to stick, it usually does not look good for very long. Waxed tile needs regular maintenance. **SIMIRON POLISHED CONCRETE** is the best solution. The process fills the pores of the concrete and grinds the floor to the customer's desired gloss level.

### FEATURES + BENEFITS:

- Reduce concrete porosity
- Densify surface
- Improve abrasion resistance
- Elevate gloss & light reflectivity
- Low odor process

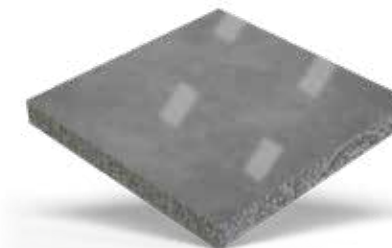
### SYSTEM STEPS



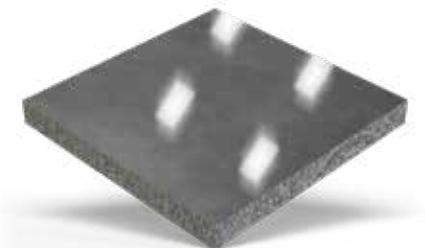
STAGE 1: EXISTING SUBSTRATE/CONCRETE



STAGE 2: POLYGROUT AND DIAMOND GRIND



STAGE 3: POLISH WITH SIMHARD



STAGE 3: AFTER SIMGUARD BURNISH WITH DIAMOND PAD

### COLOR SELECTIONS



To view all color selections refer to the **Simiron Product Color Guide**.

## SIMFLOOR HWU HIGH-WEAR URETHANE

Need a floor treatment solution that will hold up to busy activity and even fork lift traffic? **SIMFLOOR HWU** is a unique high performance, three-component, high solids, low VOC urethane floor coating that provides superior resistance against abrasion, chemicals, and UV exposure. The light, consistent texture provides an ideal, tough finish for busy facilities. The gloss level of the system is satin, which provides an enduring appearance that is still easy to clean.

### SYSTEM ATTRIBUTES



**ADHESION:**  
> 400 psi



**COEFFICIENT OF FRICTION:**  
0.60



**COMPRESSIVE STRENGTH:**  
11,600 psi



**FLAMMABILITY:**  
Self-extinguishing on concrete



**FLEXIBILITY 1/8" BEND MANDREL:**  
PASS



**FLEXURAL STRENGTH:**  
12,800 psi



**GLOSS:**  
70 - 80



**HARDNESS:**  
Pencil 4H



**TABER ABRASION:**  
12 mg loss

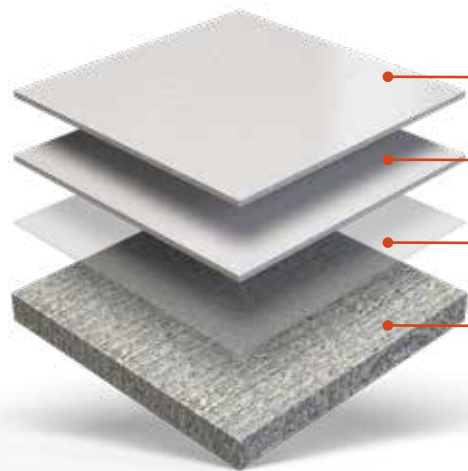


**TENSILE STRENGTH:**  
9,600 psi



**UV RESISTANT**

### SYSTEM BUILD



**TOPCOAT:**  
SIMTHANE HWU, SATIN, LIGHT GRAY

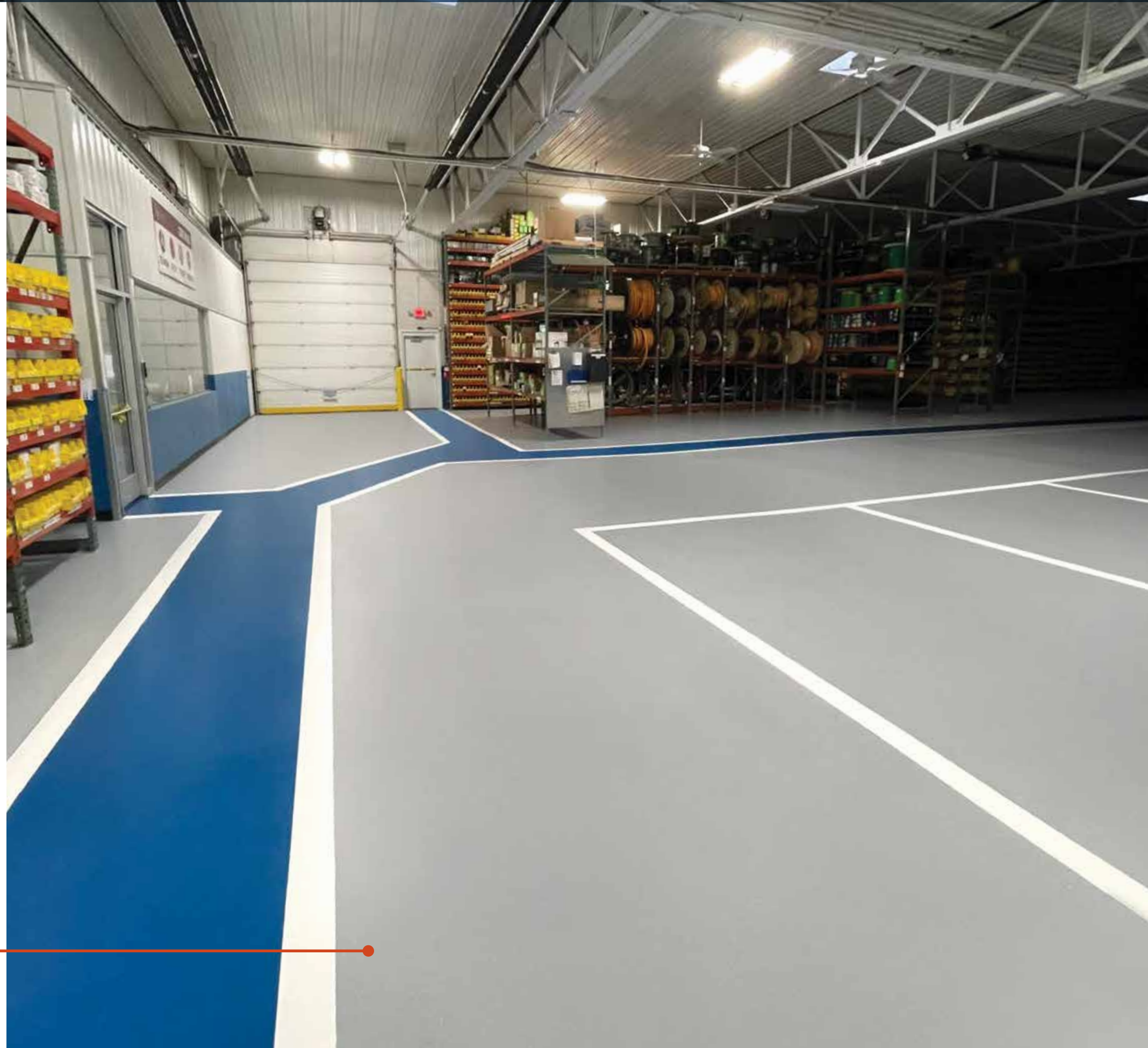
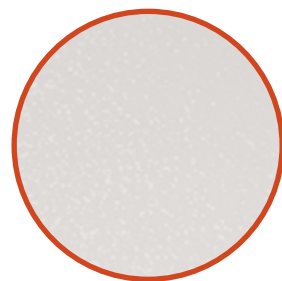
**BASECOAT:**  
1100SL 100% SOLIDS EPOXY, LIGHT GRAY

**PRIMER:**  
1000HS OR ANY SIMIRON EPOXY PRIMER, CLEAR

**PREPARED SUBSTRATE:**  
CSP 3+

### COLOR SELECTIONS

To view all color selections refer to the [Simiron Product Color Guide](#).



# CHEMICAL RESISTANCE CHART

SIMIRON SYSTEMS	SIMFLAKE SB	SIMFLAKE SB 1-DAY	SIMFLOOR HB-EPOXY	SIMFLOOR HWU	SIMFLOOR ESD	SIMFLOOR EPOXY SILOXANE	SHOP FLOOR
CHEMICAL	RESULTS	RESULTS	RESULTS	RESULTS	RESULTS	RESULTS	RESULTS
10% Acetic Acid	G	G	G	F	F	E	G
Vinegar	G	G	G	G	G	G	G
10% Citric Acid	G	G	G	G	G	G	G
10% Hydrochloric Acid	G	G	G	E	E	E	G
30% Hydrochloric Acid (muriatic)	G	G	G	E	E	E	G
10% Nitric Acid	NR	NR	G*	G	G	G	NR
50% Phosphoric Acid	F	F	F	G	G	G	F
10% Sulfuric Acid	F	F	G	F	F	G	F
37% Sulfuric Acid	F	F	F	F	F	G	F
70% Sulfuric Acid	F	F	F	F	F	G*	F
20% Ammonium Nitrate	E	E	E	E	E	E	E
20% Sodium Chloride	E	E	E	E	E	E	E
50% Sodium Hydroxide	G	G	E	E	E	E	G
Methyl Ethyl Ketone	E	E	G	E	E	E	E
Xylene	E	E	F	E	E	E	E
Ethylene Glycol	E	E	G	E	E	E	E
Isopropyl Alcohol	E	E	F	E	E	E	E
Mineral Spirits	F	F	E	E	E	E	F
Brake Fluid	E	E	F	G	G	G	E
Transmission Fluid	E	E	E	E	E	E	E
Motor Oil	E	E	E	E	E	E	E
50:1 Gas/Oil Mixture	E	E	E	E	E	E	E
E85 Gasoline	E	E	E	E	E	E	E
E95 Gasoline	E	E	E	E	E	E	E
Unleaded Gasoline	E	E	G	E	E	E	E
Skydrol	E	E	E	E	E	E	E
Betadine	E	E	G*	G*	G*	G*	E
Bleach	E	E	E	E	E	E	E
Urine	E	E	E	E	E	E	E
Coffee	E	E	E	E	E	E	E
Cola	E	E	E	E	E	E	E
Ketchup	E	E	G	F	F	E	E
Mustard	G*	G*	G	G	G	G*	G*
Red Wine	E	E	E	E	E	E	E

\*Stain is only defect.

SIMIRON SYSTEMS	SIMCRETE SL	SIMCRETE SL FLAKE	SIMCRETE SL QUARTZ	SIMQUARTZ DB	SIMCRETE SL+TC	SIMFLOOR METALLIC
CHEMICAL	RESULTS	RESULTS	RESULTS	RESULTS	RESULTS	RESULTS
10% Acetic Acid	G	G	G	F	E	E
Vinegar	G	G	G	F	E	G
10% Citric Acid	G	G	G	E	E	G
10% Hydrochloric Acid	G	G	G	E	E	E
30% Hydrochloric Acid (muriatic)	G	G	G	E	E	E
10% Nitric Acid	NR	NR	NR	NR	G	G
50% Phosphoric Acid	F	F	F	NR	G	G
10% Sulfuric Acid	F	F	F	E	G	G
37% Sulfuric Acid	F	F	F	G	F	G
70% Sulfuric Acid	F	F	F	NR	NR	G*
20% Ammonium Nitrate	E	E	E	E	E	E
20% Sodium Chloride	E	E	E	E	E	E
50% Sodium Hydroxide	G	G	G	G	E	E
Methyl Ethyl Ketone	E	E	E	E	F	E
Xylene	E	E	E	E	E	E
Ethylene Glycol	E	E	E	E	E	E
Isopropyl Alcohol	E	E	E	E	E	E
Mineral Spirits	F	F	F	E	E	E
Brake Fluid	E	E	E	G	E	G
Transmission Fluid	E	E	E	E	E	E
Motor Oil	E	E	E	E	E	E
50:1 Gas/Oil Mixture	E	E	E	E	E	E
E85 Gasoline	E	E	E	E	E	E
E95 Gasoline	E	E	E	E	E	E
Unleaded Gasoline	E	E	E	E	E	E
Skydrol	E	E	E	E	E	E
Betadine	E	E	E	G*	E	G*
Bleach	E	E	E	E	E	E
Urine	E	E	E	E	E	E
Coffee	E	E	E	E	E	E
Cola	E	E	E	E	E	E
Ketchup	E	E	E	F	E	E
Mustard	G*	G*	G*	G	E	G*
Red Wine	E	E	E	E	E	E

\*Stain is only defect.

KEY

E = Excellent

G = Good

F = Fair

NR = Not Recommend



[SIMIRON.COM](http://SIMIRON.COM) | [SHOP.SIMIRON.COM](http://SHOP.SIMIRON.COM)



**SIMIRON INC.**  
**CORPORATE HEADQUARTERS**  
3000 Research Drive  
Rochester Hills, MI 48309  
(248) 686-3600

**MADE IN THE USA**

