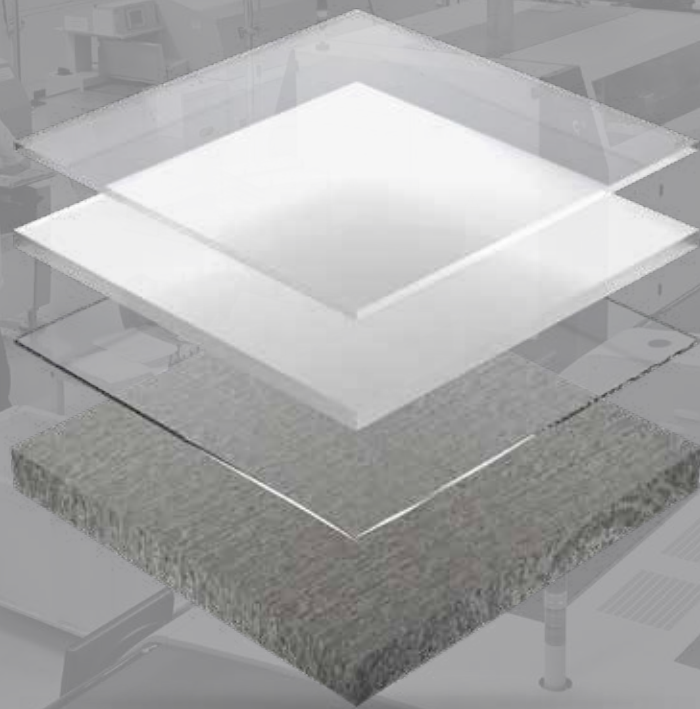




INDUSTRY LEADING SYSTEMS



FLOORING SYSTEMS
2025

EXPERIENCE THE DIFFERENCE INDUSTRY-LEADING FLOOR COATING SYSTEMS

At **SIMIRON** our floor coating systems offer a wide range of benefits, including enhanced durability, increased resistance to abrasion, impact, chemicals and moisture, improved safety with slip-resistant finishes, and enhanced aesthetics with a variety of customizable colors and finishes. These features not only enhance the functionality and longevity of your floors but also contribute to a safer and more visually appealing environment.

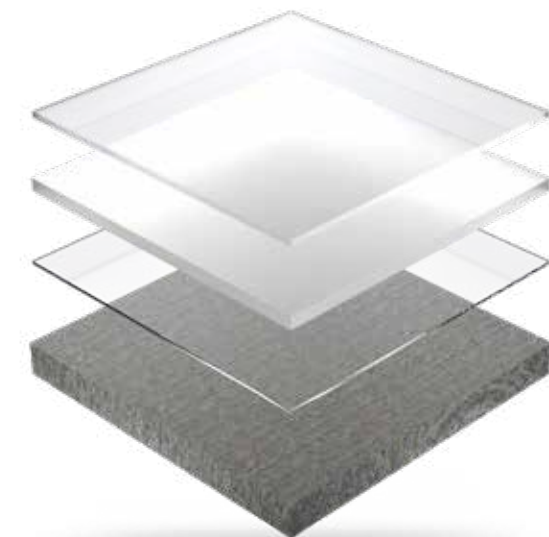


**MADE
IN THE
USA**

FLOORING SYSTEM GUIDES

INDEX

SIMFLAKE SB 1-DAY EPOXY FLOOR	4 - 5
SIMFLAKE SB 1-DAY POLYUREA FLOOR	6 - 7
SIMFLOOR HB-EPOXY	8 - 9
SIMFLOOR HWU	10 - 11
SHOP FLOOR	12 - 13
SIMFLOOR METALLIC	14 - 15
SIMFLOOR EPOXY SILOXANE	16 - 17
SIMFLOOR ESD	18 - 19
SIMCRETE SL FLAKE	20 - 21
SIMCRETE SL	22 - 23
SIMCRETE SL QUARTZ	24 - 25
SIMCRETE SL+TC	26 - 27
SIMQUARTZ DB	28 - 29
METALLIC ADDITIVES COLOR SELECTIONS	30 - 31
DECORATIVE CHIP SIGNATURE BLENDS	32
U-TINT UNIVERSAL PIGMENT PACKS	33
CHEMICAL RESISTANCE CHART	34 - 35



RECOMMENDED INDUSTRIES



ARENAS & STADIUMS



AUTOMOTIVE



EDUCATION



FIRE, POLICE & RESCUE



GROCERY & RETAIL



HEALTHCARE



PET CARE



PHARMACEUTICAL



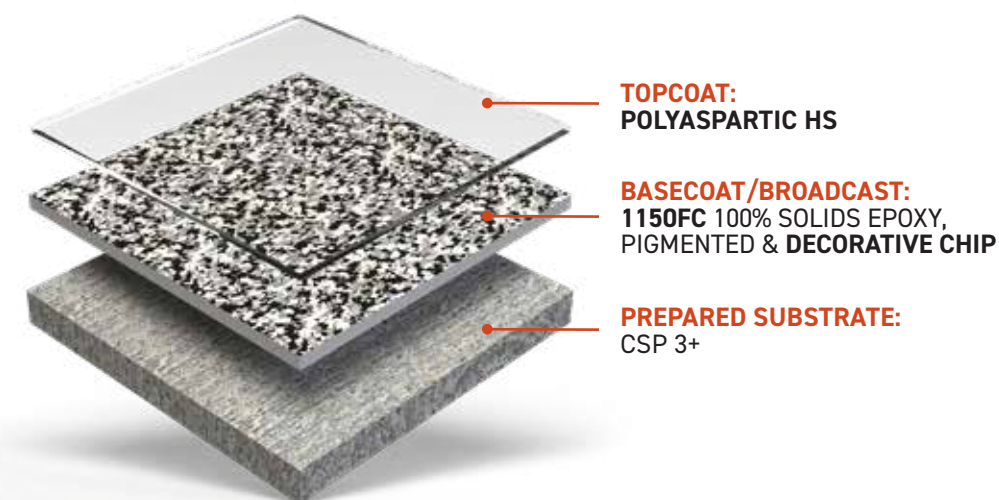
RESIDENTIAL



> SIMFLAKE SB 1-DAY EPOXY FLOOR DECORATIVE CHIP

SIMIRON SIMFLAKE SB 1-DAY EPOXY is a versatile, single-broadcast floor system that utilizes **Simiron Decorative Chip** to achieve easy-to-maintain, long-lasting results. This three-layer system offers a variety of blends. **Simflake SB 1-Day Epoxy** consists of a basecoat, 1/2" vinyl chip broadcast, and topcoat. With 16 total mils of 1150FC, this system also resists moisture vapor transmission up to 12 pounds per 1,000 square feet in 24 hours per ASTM F1869 or 85% relative humidity in the slab as directed by ASTM F2170. The featured system on this page has a gloss finish, but optional satin and non-skid texture is also available. The base system will produce an average nominal thickness of over 50 mils.

SYSTEM BUILD



SYSTEM ATTRIBUTES



ADHESION:
> 400 psi



COEFFICIENT OF FRICTION:
> .65



ELONGATION:
5 - 10%



FLAMMABILITY:
Self-extinguishing on concrete



FLEXIBILITY 1/8" BEND MANDREL:
PASS



GLOSS:
92 - 95°



HARDNESS:
Shore D 70, 86



TABER ABRASION:
30 mg loss



TENSILE STRENGTH:
4,000 psi



UV RESISTANT



VOC:
< 50 g/L



ARENAS & STADIUMS



AUTOMOTIVE



EDUCATION



FIRE, POLICE & RESCUE



GROCERY & RETAIL



HEALTHCARE



PET CARE



PHARMACEUTICAL



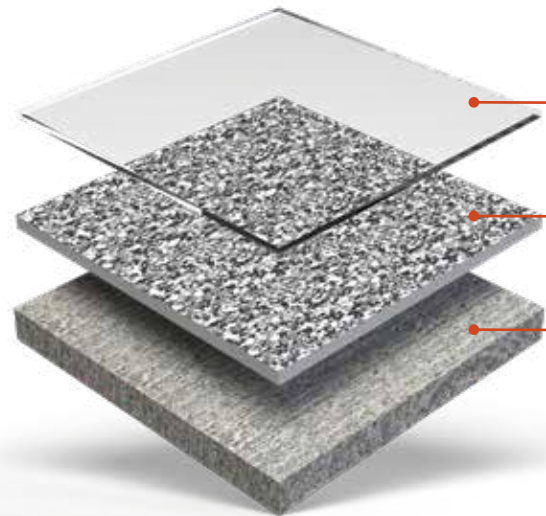
RESIDENTIAL

> SIMFLAKE SB 1-DAY POLYUREA FLOOR

DECORATIVE CHIP

SIMIRON SIMFLAKE SB 1-DAY POLYUREA is a versatile, single-broadcast floor system that utilizes **Simiron Decorative Chip** to achieve easy-to-maintain, long-lasting results and is offered in a variety of blends. The featured system has a gloss finish, but optional satin and non-skid texture is available. **Simflake SB 1-Day Polyurea** consists of a basecoat, 1/4" vinyl chip broadcast, and topcoat. The base system will produce an average nominal thickness of over 50 mils.

SYSTEM BUILD



TOPCOAT:
POLYASPARTIC HS

BASECOAT:
POLYUREA BASECOAT,
PIGMENTED & DECORATIVE CHIP

PREPARED SUBSTRATE:
CSP 3+

SYSTEM ATTRIBUTES



ADHESION:
> 400 psi



COEFFICIENT OF FRICTION:
> .65



ELONGATION:
5 - 10%



FLAMMABILITY:
Self-extinguishing
on concrete



FLEXIBILITY 1/8" BEND MANDREL:
PASS



GLOSS:
92 - 95°



HARDNESS:
Shore D 70, 86



TABER ABRASION:
30 mg loss



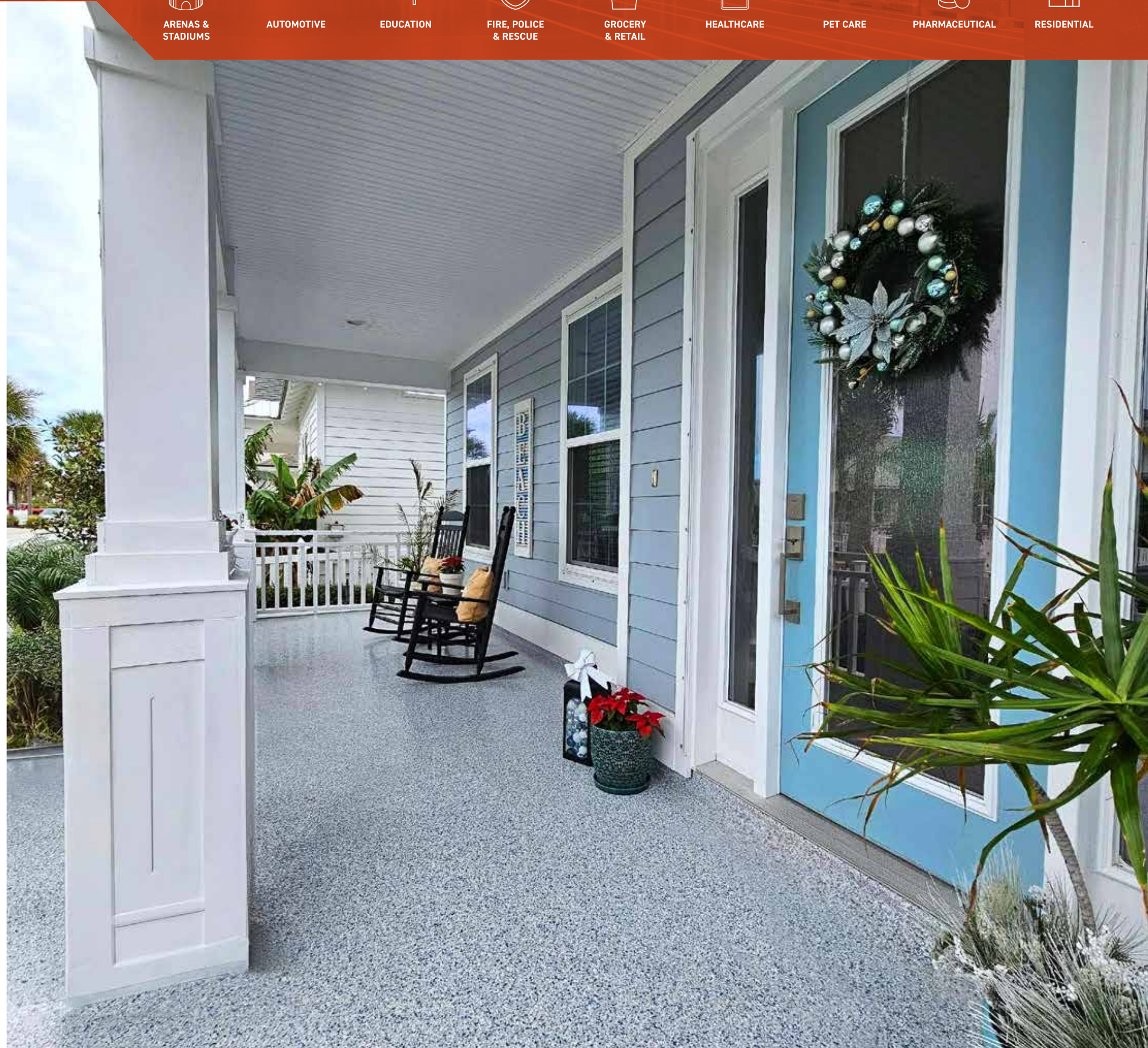
TENSILE STRENGTH:
4,000 psi



UV RESISTANT



VOC:
< 50 g/L



RECOMMENDED INDUSTRIES



ARENAS & STADIUMS



AUTOMOTIVE



EDUCATION



FIRE, POLICE & RESCUE



GROCERY & RETAIL



HEALTHCARE



PET CARE



PHARMACEUTICAL



RESIDENTIAL

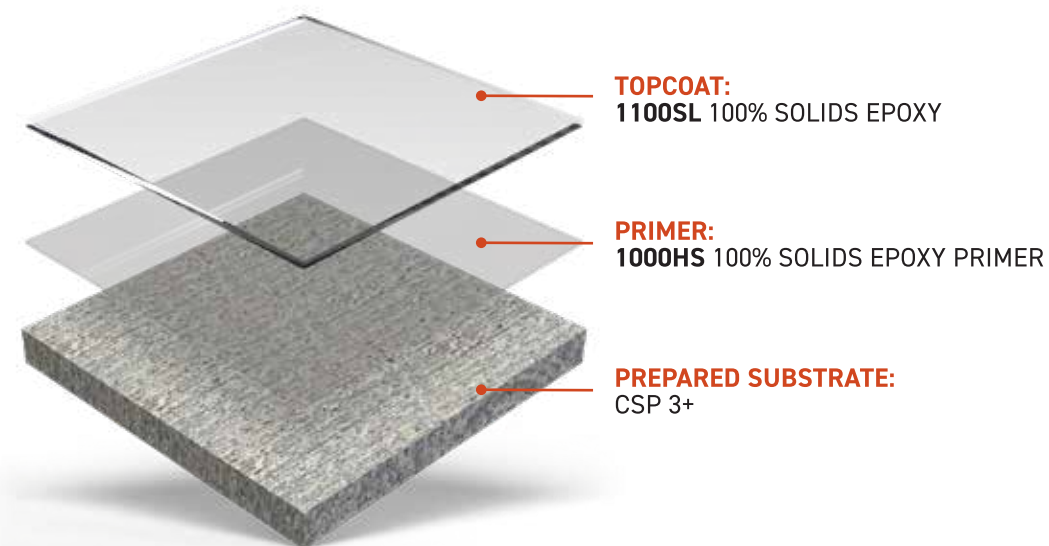


> SIMFLOOR HB-EPOXY

HIGH-GLOSS DURABLE EPOXY SYSTEM

SIMIRON SIMFLOOR HB-EPOXY is a high-gloss and durable epoxy system designed to withstand abusive environments. This 2-layer system restores eroded floors to a high-gloss finish and can be top-coated with high-wear and chemical resistant topcoats for extra levels of protection.

SYSTEM BUILD



SYSTEM ATTRIBUTES



90% SOLIDS



ADHESION: > 400 psi



COEFFICIENT OF FRICTION: > .55



COMPRESSIVE STRENGTH: 11,600 psi



ELONGATION: 5 - 10%



FLAMMABILITY: Self-extinguishing on concrete



FLEXURAL STRENGTH: 12,800 psi



GLOSS: 96°



HARDNESS: Shore D 75



TABER ABRASION: 50 mg loss



TENSILE STRENGTH: 9,600 psi



VOC: 100 g/L

RECOMMENDED INDUSTRIES



ARENAS & STADIUMS



AEROSPACE



AUTOMOTIVE



EDUCATION



FOOD & BEVERAGE



GROCERY & RETAIL



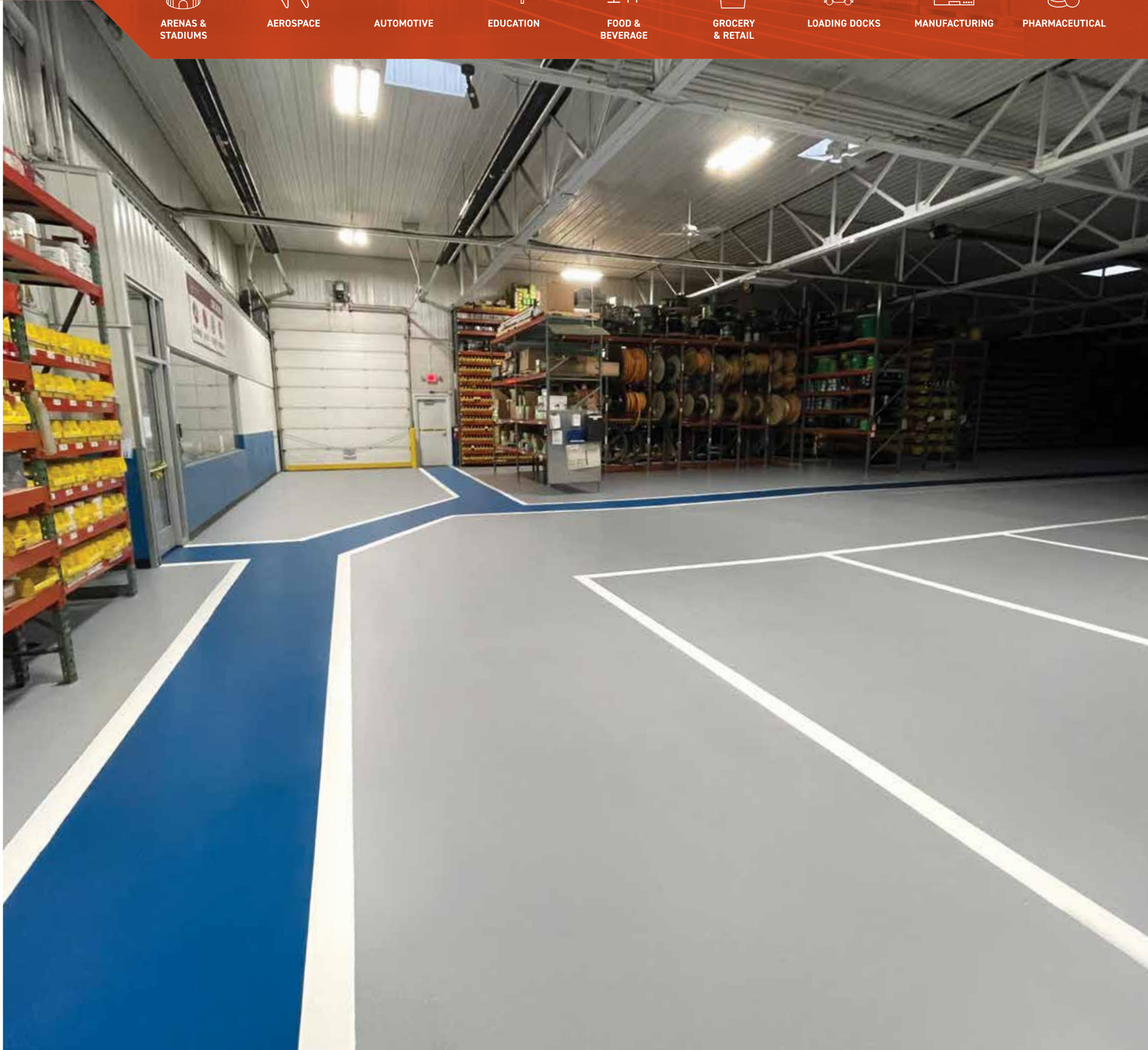
LOADING DOCKS



MANUFACTURING



PHARMACEUTICAL

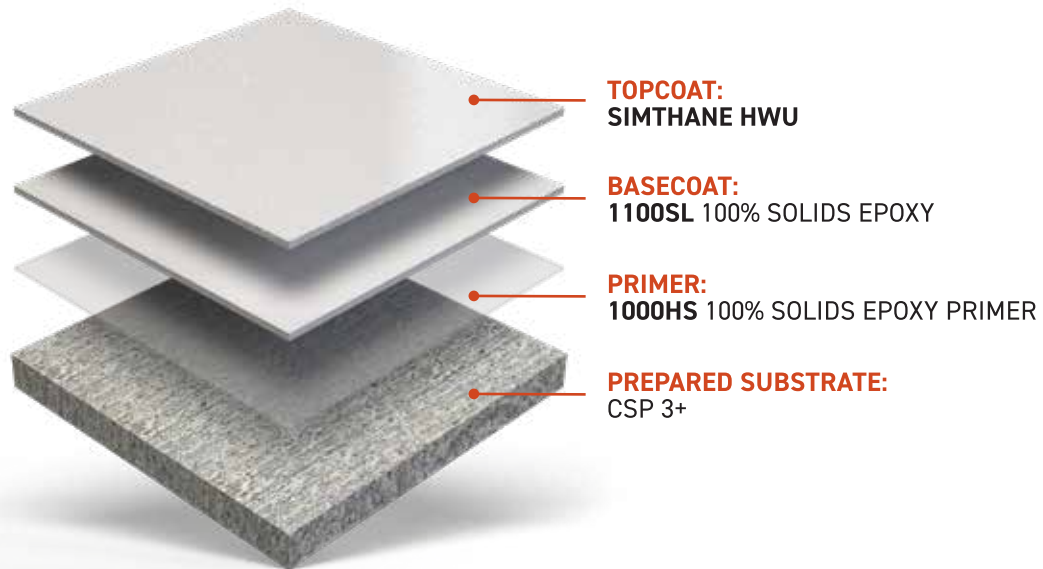


SIMFLOOR HWU

HIGH-WEAR URETHANE

SIMIRON SIMFLOOR HWU system is based on a unique high performance, three-component, high solids, low VOC urethane floor coating that provides superior resistance against abrasion, chemicals and UV exposure while imparting excellent flexibility. The topcoat, **Simthane HWU**, comes neutral and has a satin finish with a light, consistent texture.

SYSTEM BUILD



SYSTEM ATTRIBUTES



ADHESION:
> 400 psi



COEFFICIENT OF FRICTION:
0.60



COMPRESSIVE STRENGTH:
11,600 psi



FLAMMABILITY:
Self-extinguishing on concrete



FLEXIBILITY 1/8" BEND MANDREL:
PASS



FLEXURAL STRENGTH:
12,800 psi



GLOSS:
60 - 70°



HARDNESS:
Pencil 4H



TABER ABRASION:
12 mg loss



TENSILE STRENGTH:
9,600 psi



UV RESISTANT



VOC:
95 g/L

RECOMMENDED INDUSTRIES



ARENAS & STADIUMS



AUTOMOTIVE



LOADING DOCKS



MANUFACTURING



MECHANICAL ROOMS



PHARMACEUTICAL

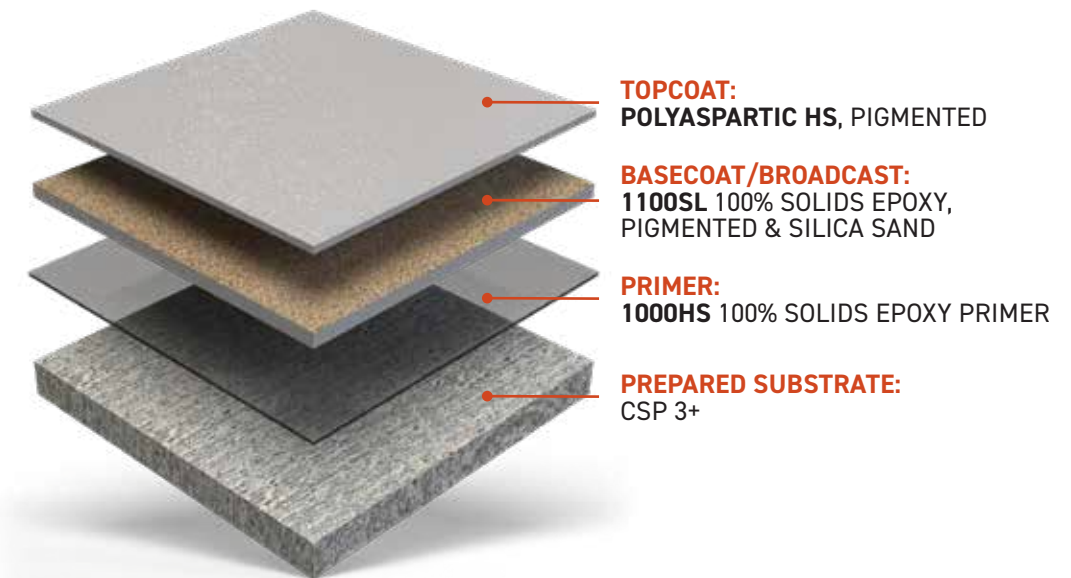


SHOP FLOOR

HIGH-GLOSS DURABLE EPOXY SYSTEM

SIMIRON SHOP FLOOR is a durable system with slip-resistant texture, achieved with a single-broadcast of silica sand. This 1/16" floor is an industry standard for protecting concrete in manufacturing and work zones. **Shop Floor** is also used in areas subject to tough traffic. Our version locks in the broadcast with a polyaspartic, which provides UV stability and chemical resistance for the base and broadcast.

SYSTEM BUILD



SYSTEM ATTRIBUTES



ADHESION:
> 400 psi



COEFFICIENT OF FRICTION:
> .55



COMPRESSIVE STRENGTH:
11,600 psi



ELONGATION:
5 - 10%



FLAMMABILITY:
Self-extinguishing on concrete



FLEXIBILITY 1/8" BEND MANDREL:
PASS



FLEXURAL STRENGTH:
12,800 psi



HARDNESS:
Shore D 70, 86



TABER ABRASION:
30 mg loss



TENSILE STRENGTH:
9,600 psi



UV RESISTANT



VOC:
< 50 g/L

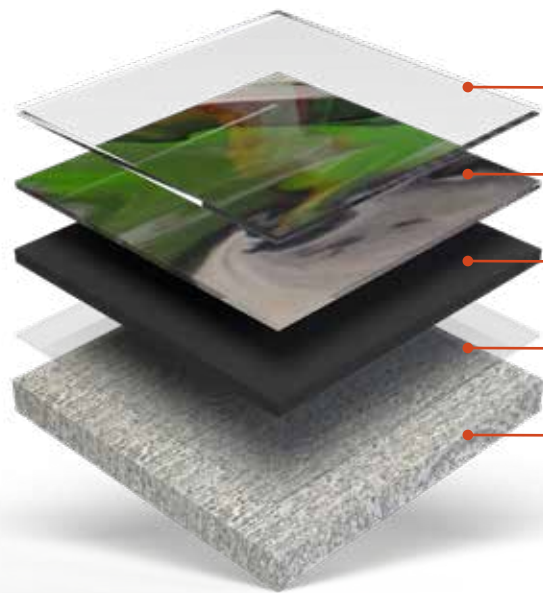


> SIMFLOOR METALLIC

EXOTIC PIGMENT SYSTEM

SIMIRON SIMFLOOR METALLIC floor system uses an exotic pigment that creates a beautiful three-dimensional appearance that gives the illusion of waves, swirls and ripples. The finished appearance of the Metallic flooring system can vary from gradual, subtle changes in color to more distinctive effects. Each project is truly unique.

SYSTEM BUILD



- TOPCOAT:**
971EPS HIGH SOLIDS EPOXY SILOXANE, SATIN
- METALLIC ADDITIVE:**
1100SL W/METALLIC ADDITIVE
- BASECOAT:**
1100SL 100% SOLIDS EPOXY PIGMENTED
- PRIMER:**
1000HS 100% SOLIDS EPOXY PRIMER, CLEAR
- PREPARED SUBSTRATE:**
CSP 3+

SYSTEM ATTRIBUTES



ADHESION:
> 400 psi



COEFFICIENT OF FRICTION:
.05



COMPRESSIVE STRENGTH:
11,600 psi



ELONGATION:
5 - 10%



FLEXIBILITY 1/8\"/>



FLEXURAL STRENGTH:
12,800 psi



GLOSS:
88°



HARDNESS:
Shore D 75



TABER ABRASION:
40 mg loss



TENSILE STRENGTH:
9,600 psi



UV RESISTANT



VOC:
< 100 g/L



RECOMMENDED INDUSTRIES



AUTOMOTIVE



FIRE, POLICE & RESCUE



MANUFACTURING



PET CARE



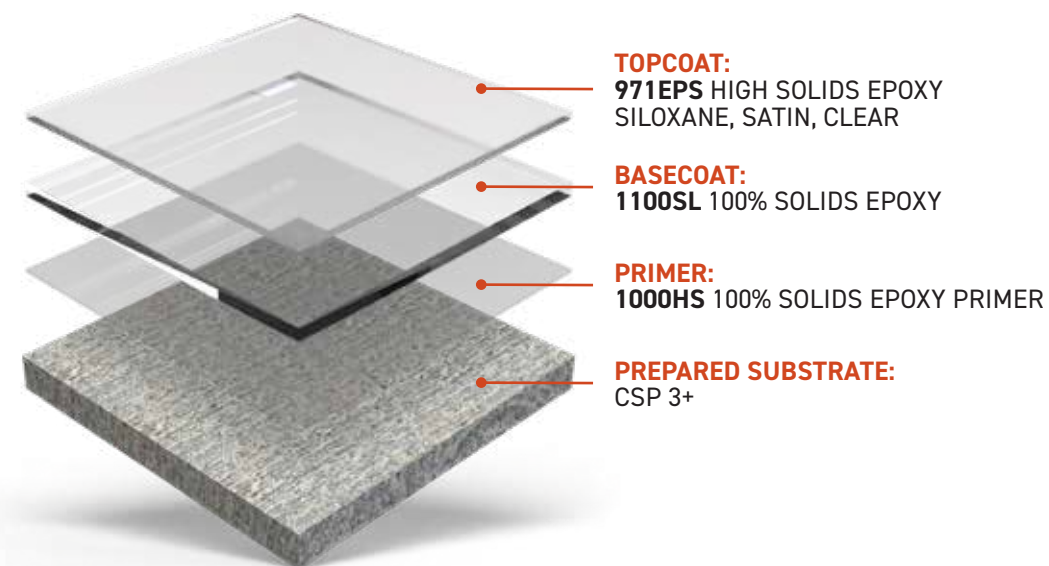
PHARMACEUTICAL



> SIMFLOOR EPOXY SILOXANE CHEMICAL-RESISTANT FLOOR SYSTEM

SIMIRON SIMFLOOR EPOXY SILOXANE is a chemical-resistant floor system that offers maximum surface protection commonly found in abusive environments. This low odor, low VOC system offers abrasion, chemical, and UV resistance. The recommended topcoat finish is satin and is easy-to-apply. A gloss version is also available.

SYSTEM BUILD



SYSTEM ATTRIBUTES



ADHESION:
> 400 psi



COEFFICIENT OF FRICTION:
.50



COMPRESSIVE STRENGTH:
11,600 psi



ELONGATION:
5 - 10%



FLAMMABILITY:
Self-extinguishing on concrete



FLEXIBILITY 1/8" BEND MANDREL:
PASS



FLEXURAL STRENGTH:
12,800 psi



HARDNESS:
Shore D 75



TABER ABRASION:
40 mg loss



TENSILE STRENGTH:
9,600 psi



UV RESISTANT



VOC:
< 100 g/L



AEROSPACE



DATA CENTERS



ELECTRIC ASSEMBLY



HEALTHCARE



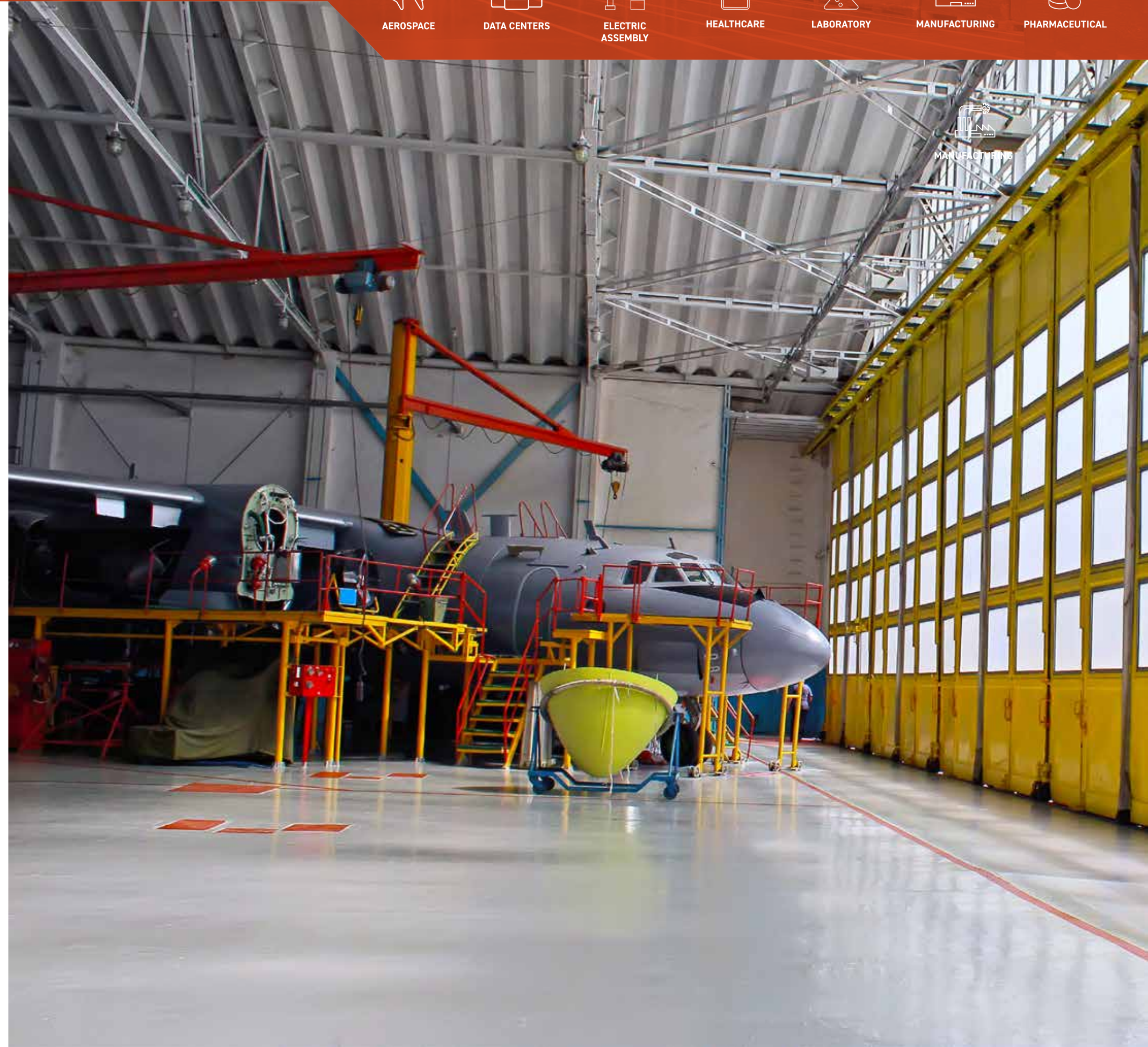
LABORATORY



MANUFACTURING



PHARMACEUTICAL

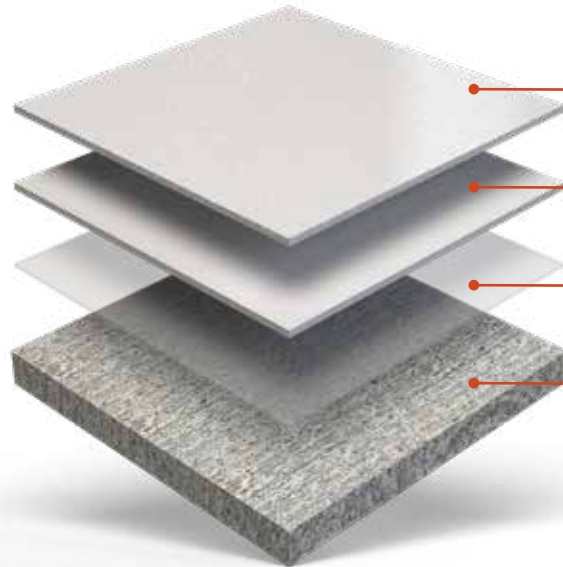


> SIMFLOOR ESD

ELECTROSTATIC DISSIPATIVE FLOORING

SIMIRON SIMFLOOR ESD has a static dissipative topcoat that helps to protect small, sensitive computer circuitry used in aircraft electronic components. The system provides a valuable foundation for any comprehensive static charge management solution. The coating system will also provide protection against airplane fluids and fuel, and resists damage from abrasion and UV exposure from large access doors.

SYSTEM BUILD



TOPCOAT:
SIMTHANE ESD, SATIN, LIGHT GRAY

BASECOAT:
1100SL 100% SOLIDS EPOXY, LIGHT GRAY

PRIMER:
1000HS 100% SOLIDS EPOXY PRIMER, CLEAR

PREPARED SUBSTRATE:
CSP 3+

SYSTEM ATTRIBUTES



ADHESION:
> 400 psi



COEFFICIENT OF FRICTION:
0.60



COMPRESSIVE STRENGTH:
11,600 psi



FLAMMABILITY:
Self-extinguishing on concrete



FLEXIBILITY 1/8" BEND MANDREL:
PASS



HARDNESS:
Pencil 4H



GLOSS:
60 - 70°



RESISTANCE:
1x106 - <1x109 ohms



TABER ABRASION:
12 mg loss



TENSILE STRENGTH:
9,600 psi



UV RESISTANT



VOC:
95 g/L

RECOMMENDED INDUSTRIES



AUTOMOTIVE



EDUCATION



FIRE, POLICE
& RESCUE



FOOD &
BEVERAGE



GROCERY
& RETAIL



HEALTHCARE



MANUFACTURING



PHARMACEUTICAL

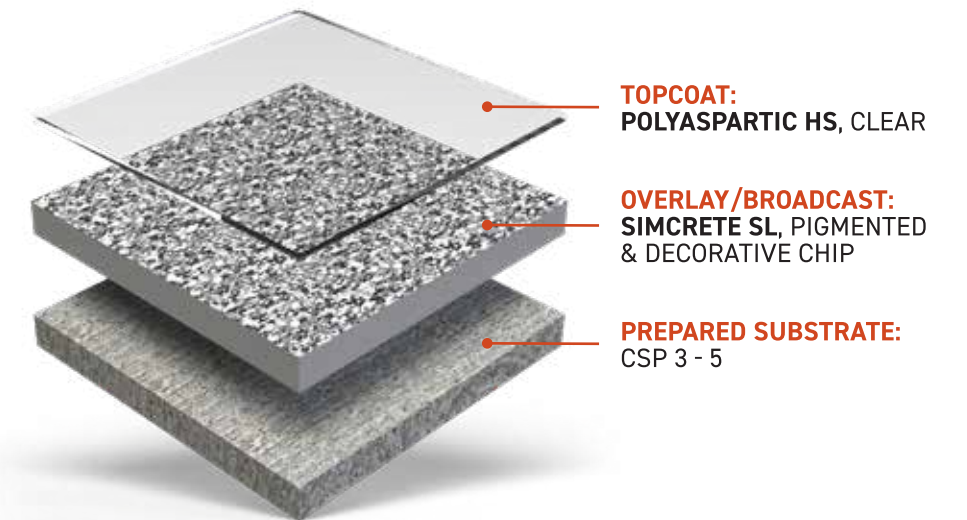


» SIMCRETE SL FLAKE

SINGLE BROADCAST DECORATIVE FLAKE URETHANE MORTAR SYSTEM

SIMIRON SIMCRETE SF FLAKE is a 3-layer cementitious urethane mortar slurry system with a single broadcast of **Decorative Chip** applied at 1/4" thick. This system resurfaces eroded concrete, offers extreme thermal shock resistance, and has excellent resistance to moisture vapor transmission.

SYSTEM BUILD



SYSTEM ATTRIBUTES

 BOND STRENGTH: 100% Concrete Failure	 COEFFICIENT OF FRICTION: > 0.63	 COMPRESSIVE STRENGTH: 8,558 psi	 FLAMMABILITY: Self-extinguishing on concrete	 FLEXURAL STRENGTH: 2,780 psi	 GLOSS: 92 - 95°
 IMPACT STRENGTH: > 160 in./lbs.	 FUNGI GROWTH RESISTANCE: PASSES	 TABER ABRASION: 30 mg loss	 TENSILE STRENGTH: 1,120 psi	 UV RESISTANT	 VOC: < 50 g/L



EDUCATION



FIRE, POLICE & RESCUE



FOOD & BEVERAGE



GROCERY & RETAIL

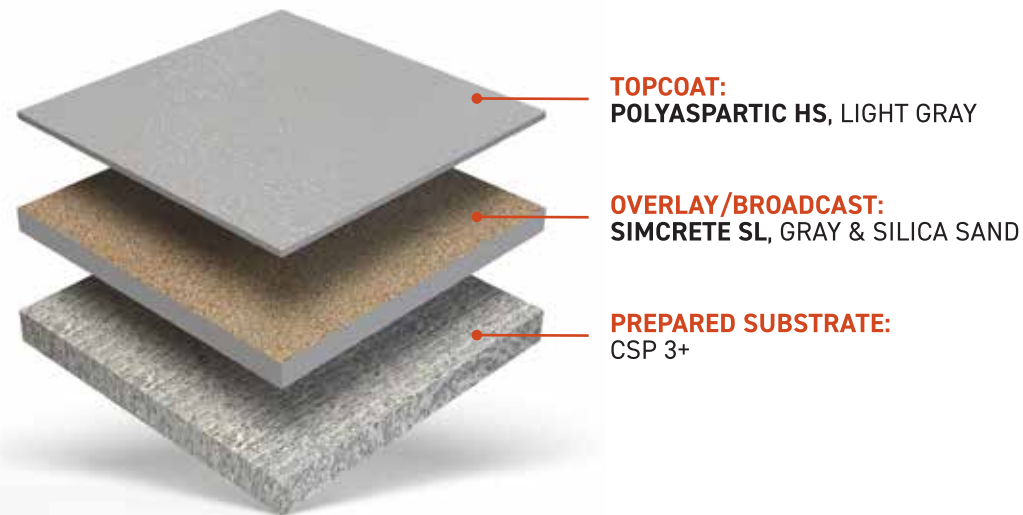
> SIMCRETE SL

HEAVY-DUTY URETHANE CEMENT

SIMIRON SIMCRETE SL is a self-leveling urethane cement. This heavy-duty flooring system is typically installed at 1/8" thick and broadcast to rejection with silica sand to achieve 3/16" total thickness and a slip-resistant texture suited for wet environments subject to thermal shock. This featured system locks in the broadcast with a polyaspartic, which provides UV stability and chemical resistance.

Simcrete SL also has moisture control properties and can withstand moisture vapor transmission up to 12 lbs./1,000 sq. ft. in 24 hours as measured by calcium chloride using ASTM F1869 or 85% RH as measured by in-situ relative humidity using ASTM F2170.

SYSTEM BUILD



SYSTEM ATTRIBUTES



BOND STRENGTH:
100% Concrete Failure



COEFFICIENT OF FRICTION:
> 0.63



COMPRESSIVE STRENGTH:
8,558 psi



FLAMMABILITY:
Self-extinguishing on concrete



FLEXURAL STRENGTH:
2,780 psi



GLOSS:
92 - 95°



IMPACT STRENGTH:
> 160 in./lbs.



FUNGI GROWTH RESISTANCE:
PASSES



TABER ABRASION:
30 mg loss



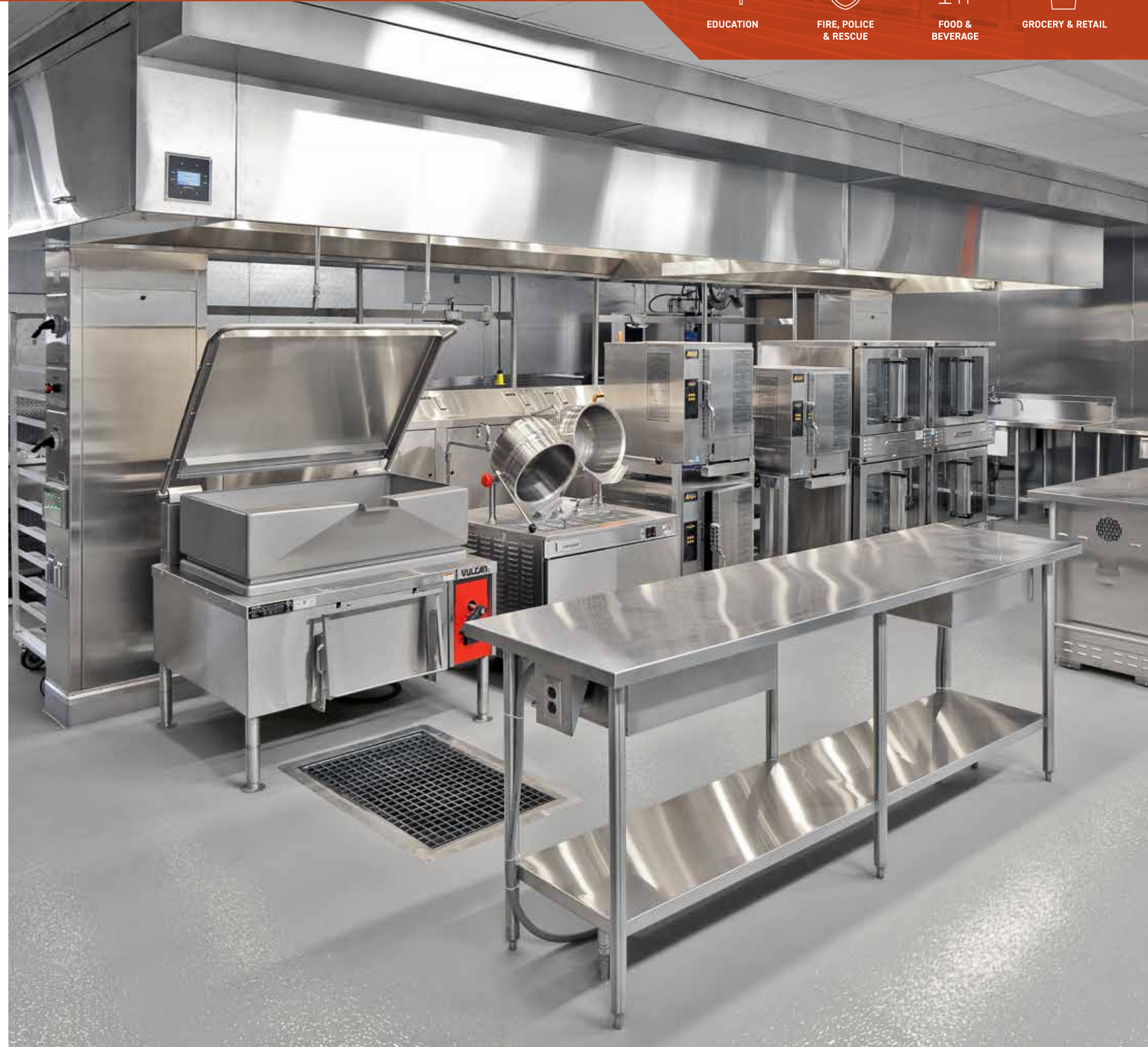
TENSILE STRENGTH:
1,120 psi



UV RESISTANT



VOC:
< 50 g/L



RECOMMENDED INDUSTRIES



EDUCATION



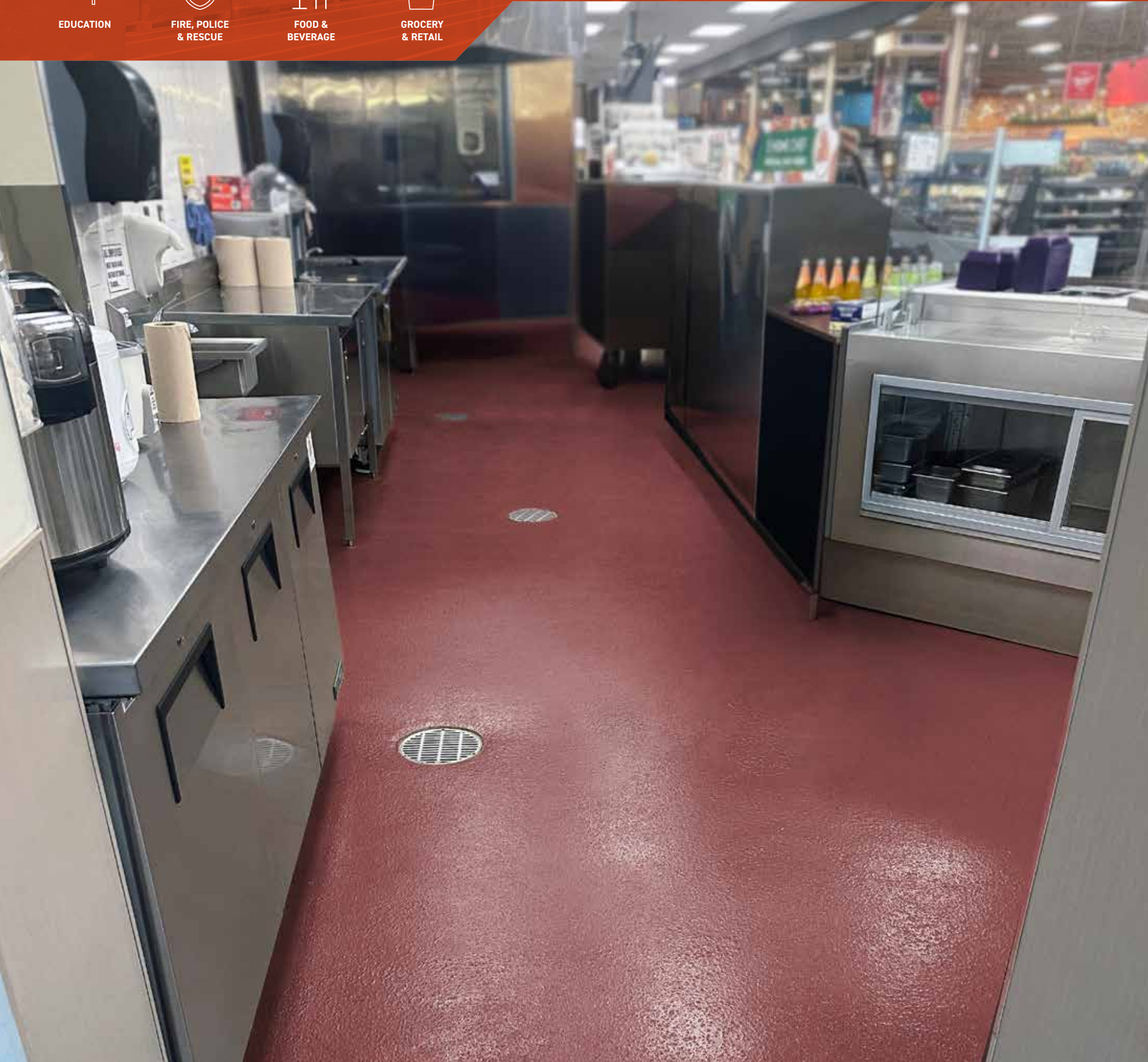
FIRE, POLICE
& RESCUE



FOOD &
BEVERAGE



GROCERY
& RETAIL



> SIMCRETE SL QUARTZ

SINGLE BROADCAST QUARTZ URETHANE MORTAR SYSTEM

SIMIRON SIMCRETE SL QUARTZ is a 3-layer cementitious urethane mortar slurry system with a single broadcast of decorative quartz applied at 3/16" thick. This system resurfaces eroded concrete, offers extreme thermal shock resistance, and has excellent resistance to moisture vapor transmission.

SYSTEM BUILD



SYSTEM ATTRIBUTES

 BOND STRENGTH: 100% Concrete Failure	 COEFFICIENT OF FRICTION: > 0.63	 COMPRESSIVE STRENGTH: 8,558 psi	 FLAMMABILITY: Self-extinguishing on concrete	 FLEXURAL STRENGTH: 2,780 psi	 GLOSS: 92 - 95°
 IMPACT STRENGTH: > 160 in./lbs.	 FUNGI GROWTH RESISTANCE: PASSES	 TABER ABRASION: 30 mg loss	 TENSILE STRENGTH: 1,120 psi	 UV RESISTANT	 VOC: < 50 g/L



AUTOMOTIVE



EDUCATION



GROCERY & RETAIL



HEALTHCARE



FIRE, POLICE & RESCUE



FOOD & BEVERAGE



MANUFACTURING



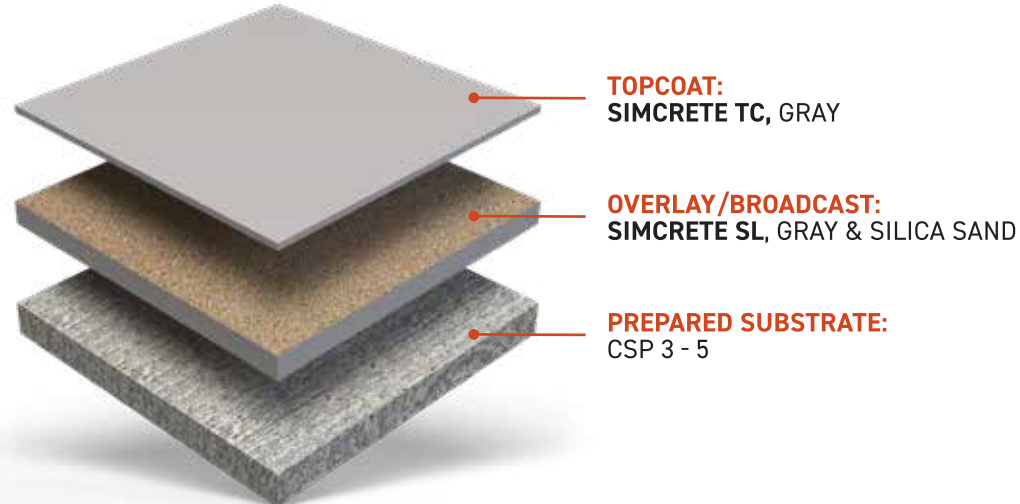
PHARMACEUTICAL

> SIMCRETE SL+TC

SINGLE BROADCAST QUARTZ URETHANE MORTAR SYSTEM

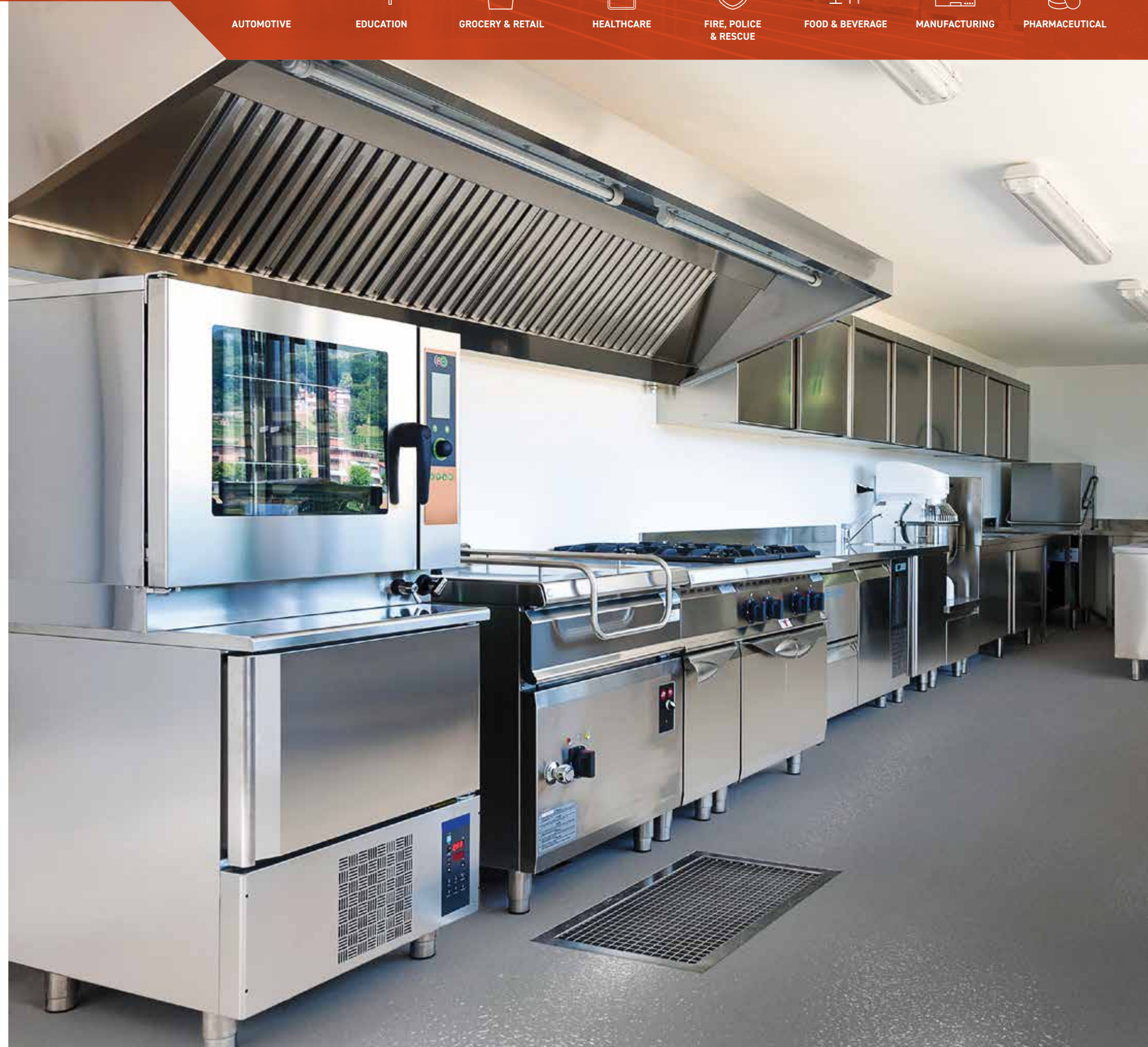
SIMIRON SIMCRETE SL+TC is a self-leveling urethane cement. This heavy-duty flooring system is typically installed at 1/8" thick and broadcast to rejection with silica sand to achieve 3/16" total thickness and a slip-resistant texture suited for wet environments subject to thermal shock. The broadcast is locked in with a **Simcrete** topcoat, that provides a flat finish and maintains urethane cement properties through the entire system.

SYSTEM BUILD



SYSTEM ATTRIBUTES

- BOND STRENGTH:** 100% Concrete Failure
- COEFFICIENT OF FRICTION:** > 0.63
- COMPRESSIVE STRENGTH:** 8,550 psi
- FLAMMABILITY:** Self-extinguishing on concrete
- FLEXURAL STRENGTH:** 2,900 psi
- IMPACT STRENGTH:** > 160 in./lbs.
- FUNGI GROWTH RESISTANCE:** PASSES
- TENSILE STRENGTH:** 1,120 psi
- VOC:** < 50 g/L



RECOMMENDED INDUSTRIES



ARENAS & STADIUMS



AUTOMOTIVE



EDUCATION



FIRE, POLICE & RESCUE



GROCERY & RETAIL



PET CARE



PHARMACEUTICAL

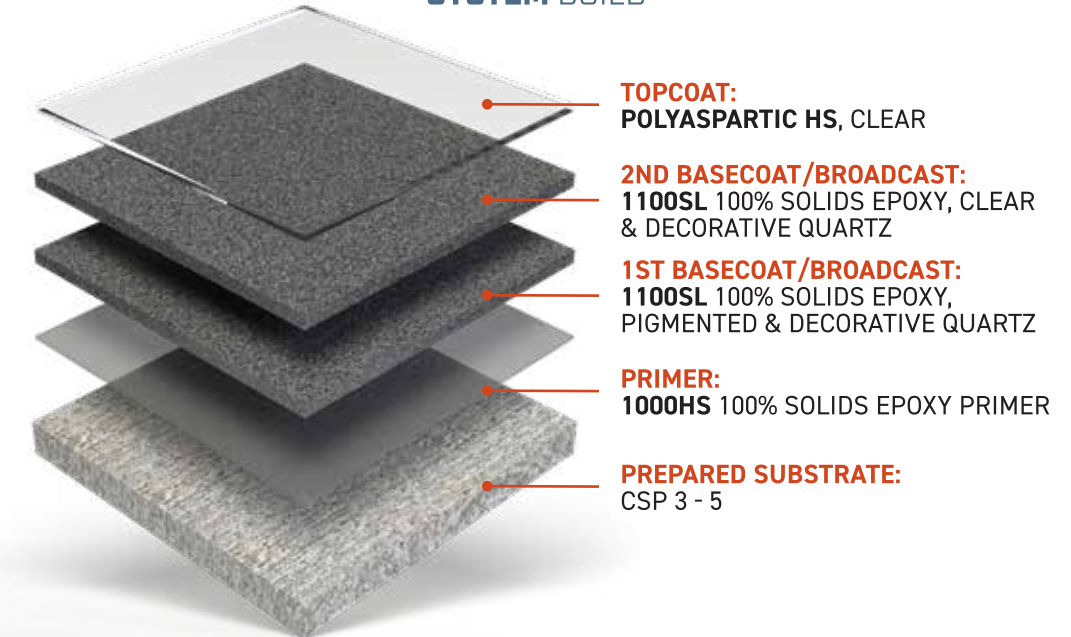


> SIMQUARTZ DB

DOUBLE BROADCAST QUARTZ URETHANE MORTAR SYSTEM

SIMIRON SIMQUARTZ DB is a versatile, double-broadcast floor system that utilizes decorative quartz to achieve easy-to-maintain, long-lasting results. This three-layer system is available in numerous color blends. The featured system on this page has a non-skid gloss finish, but optional smoother textures and a satin finish are available. **SimQuartz DB** consists of two decorative quartz broadcast layers and a topcoat.

SYSTEM BUILD



SYSTEM ATTRIBUTES



ADHESION:
> 400 psi



COEFFICIENT OF FRICTION:
0.65



ELONGATION:
5 - 10%



FLAMMABILITY:
Self-extinguishing on concrete



FLEXIBILITY 1/8" BEND MANDREL:
PASS



GLOSS:
92 - 95°



HARDNESS:
Shore D 70, 86



SLIP RESISTANT



TABER ABRASION:
30 mg loss



TENSILE STRENGTH:
4,000 psi



UV RESISTANT



VOC:
< 50 g/L

› U-TINT UNIVERSAL PIGMENT PACKS



SIMIRON U-TINT is a line of universal pigment packs that are 100% solids, zero VOC and designed to easily mix into SIMIRON'S EPOXY, URETHANE and POLYASPARTIC coatings.

U-TINT packs exhibit excellent color consistency and stability for in-field tinting and application—allowing greater flexibility for applicators. All available in convenient pint-sized cans, U-TINT allows for tinting of multiple sizes of resin.

FEATURES + BENEFITS:

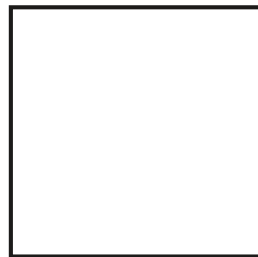
- Excellent Color Stability
- 14 Color Options
- Low Viscosity
- Easy-to-Mix
- In-field Tinting
- Excellent Hiding Properties

RECOMMENDED USES:

- SIMCRETE
- SIMTHANE HWU
- SIMTHANE ESD
- POLYASPARTIC HS
- POLYUREA
- 1000HS - 100% SOLIDS EPOXY PRIMER
- 1100SL - 100% SOLIDS EPOXY
- 1150FC - HYBRID POLYUREA-EPOXY
- MVB - MOISTURE VAPOR BARRIER



COLOR SELECTIONS:



WHITE



SANDSTONE



TAUPE



BUFF



LIGHT GRAY



HAZE GRAY



DECK GRAY



SAFETY YELLOW



SKY BLUE



SAFETY ORANGE



SAFETY RED



SAFETY GREEN



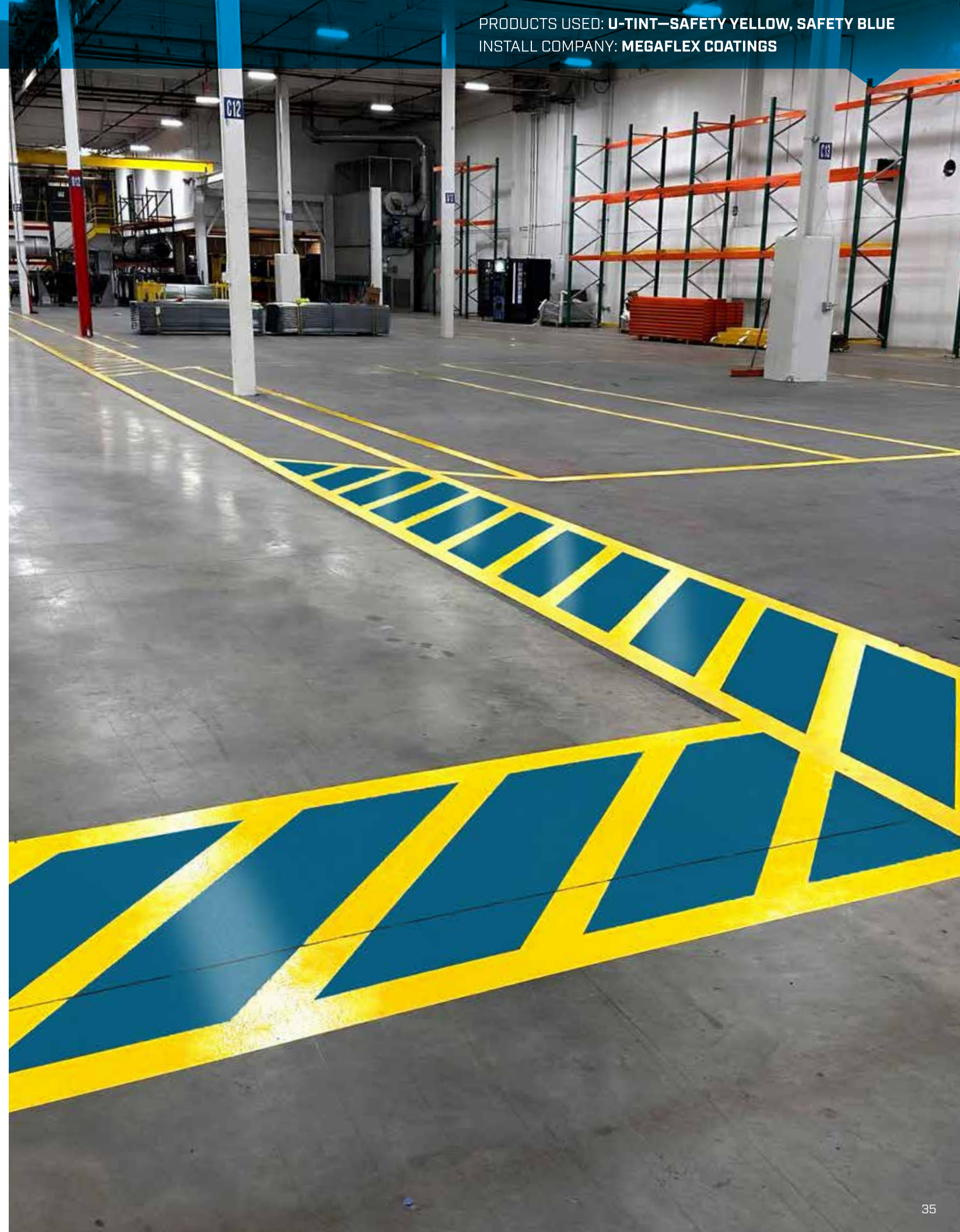
SAFETY BLUE



TILE RED

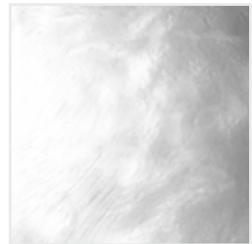


BLACK



METALLIC ADDITIVES

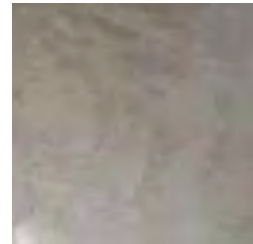
COLOR SELECTIONS



BRIGHT WHITE



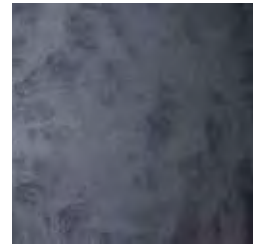
PEARL



OYSTER



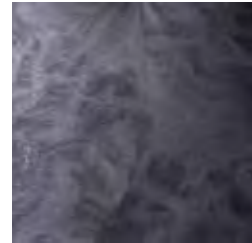
ALUMINUM



SMOKE GRAY



GRAPHITE



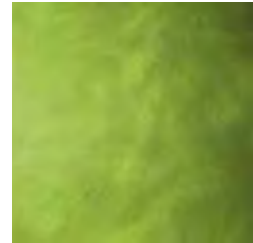
CHARCOAL



BLACK PEARL



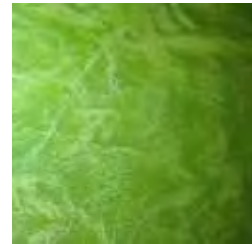
LEMONADE



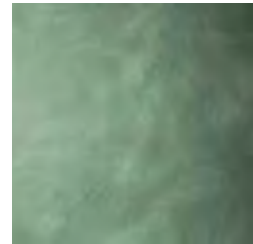
OLIVE



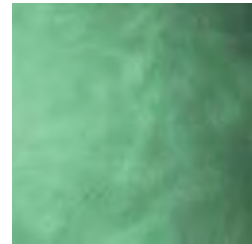
LIME



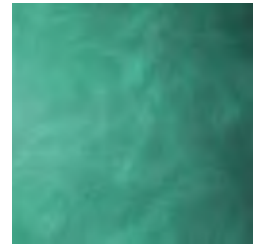
APPLE GREEN



PISTACHIO



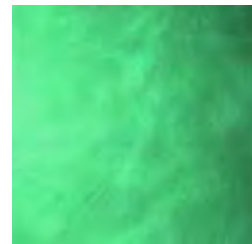
SEA GREEN



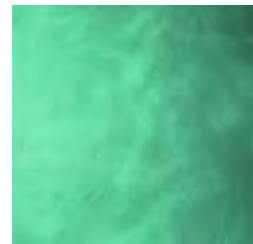
WINTER GREEN



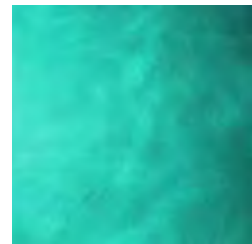
JADE



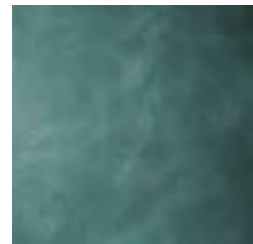
SAGE GREEN



TURQUOISE



PEACOCK



TEA GREEN



DARK EMERALD



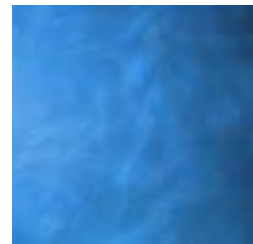
LUSTER BLUE



SURF BLUE



SHIMMER BLUE



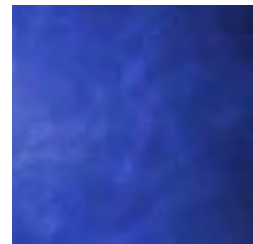
ELECTRIC BLUE



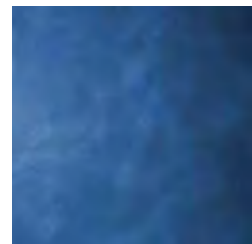
COBALT



ROYAL BLUE



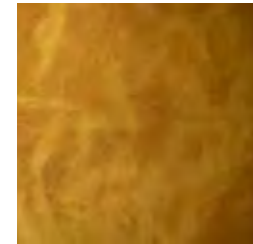
TWILIGHT BLUE



SAPPHIRE



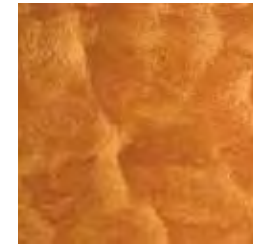
BRIGHT ORANGE



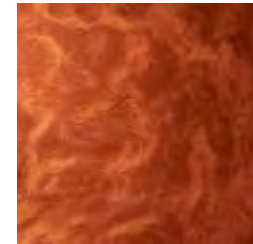
GOLD RUSH



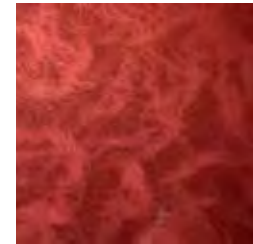
AZTEC GOLD



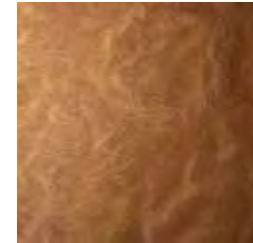
MARIGOLD



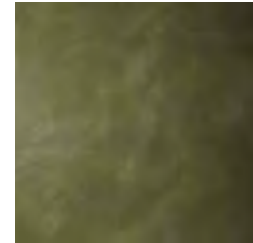
COPPER



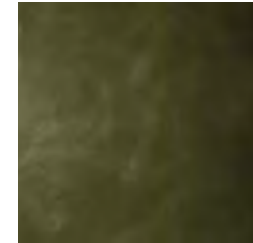
CRIMSON



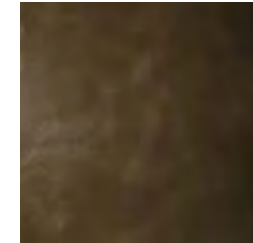
CHESTNUT BROWN



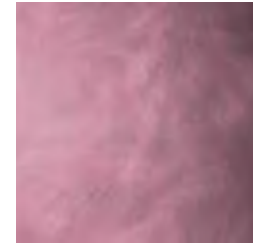
WALNUT BROWN



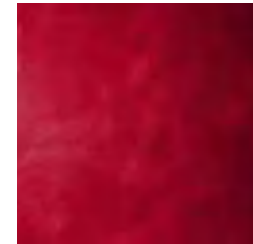
MOCHA BROWN



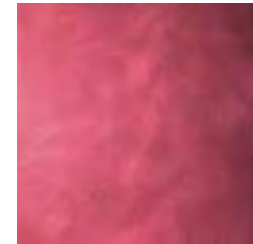
BRONZE



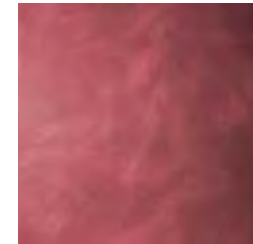
PINK



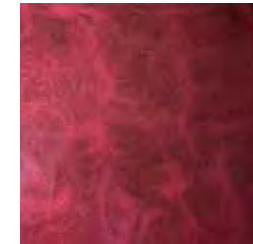
RED BLOSSOM



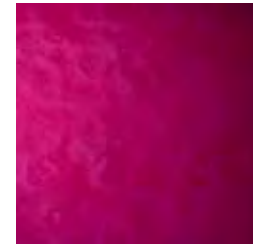
ROSE



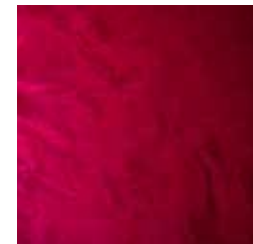
SCARLET



CABERNET



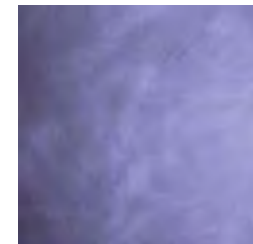
MAGENTA



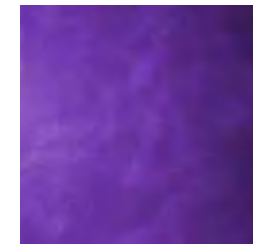
MERLOT



VIOLET



LAVENDER



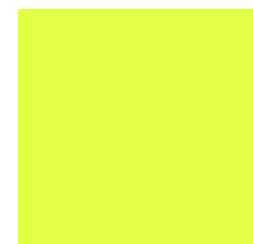
PURPLE

AVAILABLE SIZES:
5oz. & 32 oz.

SCAN TO SEE PRODUCTS



shop.simiron.com



NEON YELLOW



NEON ORANGE YELLOW



NEON ORANGE



NEON RED



NEON BRIGHT RED



NEON PINK



NEON MAGENTA



NEON GREEN



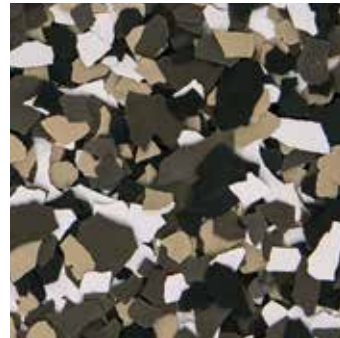
NEON BLUE



NEON PURPLE

DECORATIVE CHIP SIGNATURE BLENDS

U-TINT UNIVERSAL PIGMENT PACKS



AUTUMN BROWN



CABIN FEVER



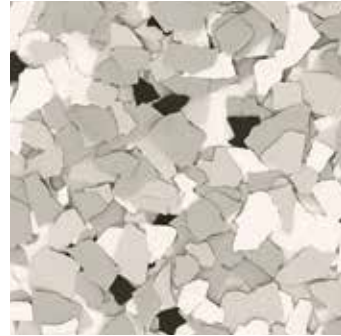
COYOTE



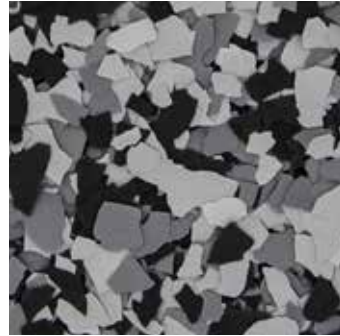
CREEKBED



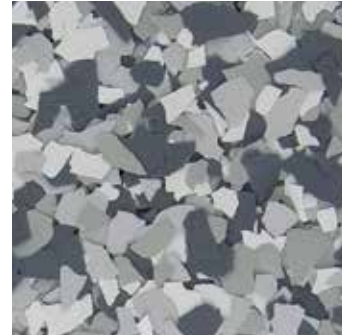
DOMINO



FEATHER GRAY



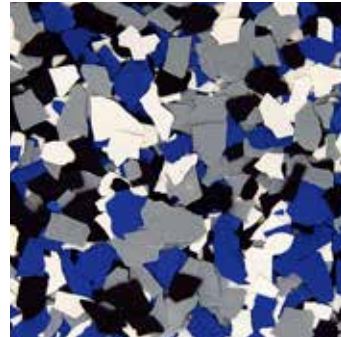
GLACIER



GRAVEL



NIGHTFALL



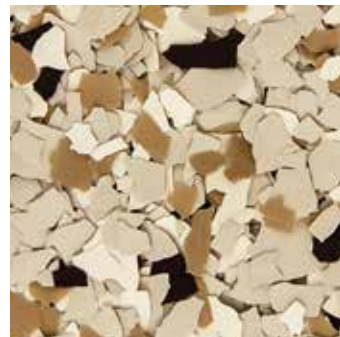
ORBIT



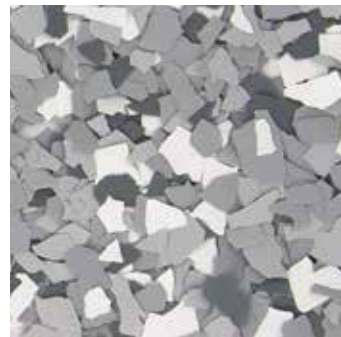
OUTBACK



SAFARI



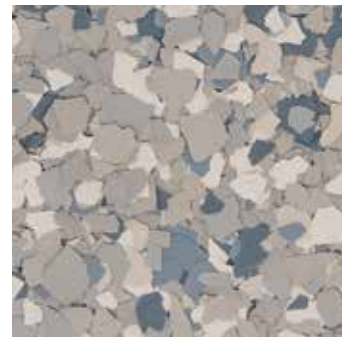
SHORELINE



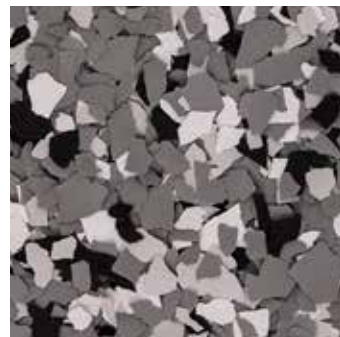
STARGAZER



STONEWASH

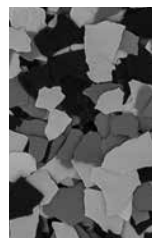


TIDAL WAVE

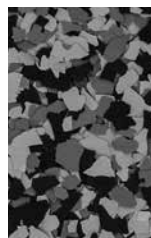


WOMBAT

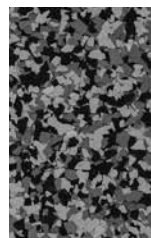
AVAILABLE SIZES:*



1/4" CHIP



1/8" CHIP



1/16" CHIP

Color samples are available upon request. 1/4" chip size pictured. Please contact Simiron customer service at (248) 686-3600 or your sales representative. *1/8" and 1/16" chip are special order.

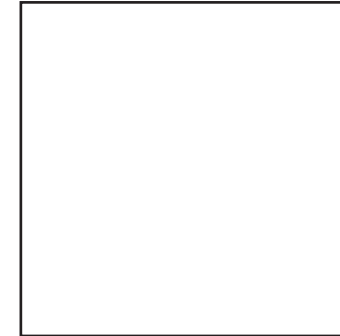
SCAN TO SEE PRODUCTS



SIMIRON.COM

SIMIRON U-TINT is a line of universal pigment packs that are 100% solids, zero VOC and designed to easily mix into **SIMIRON'S EPOXY, URETHANE** and **POLYASPARTIC** coatings.

U-TINT packs exhibit excellent color consistency and stability for in-field tinting and application—allowing greater flexibility for applicators. All available in convenient pint-sized cans, **U-TINT** allows for tinting of multiple sizes of resin.



WHITE



SANDSTONE



TAUPE



BUFF



LIGHT GRAY



HAZE GRAY



DECK GRAY



SAFETY YELLOW



SKY BLUE



SAFETY ORANGE



SAFETY RED



SAFETY GREEN



SAFETY BLUE



TILE RED



BLACK

SCAN TO SEE PRODUCTS



SIMIRON.COM

*Printed images may differ from actual color blends.

CHEMICAL RESISTANCE CHART

SIMIRON SYSTEMS	SIMFLAKE SB EPOXY	SIMFLAKE SB POLYUREA	SIMFLOOR HB-EPOXY	SIMFLOOR HWU	SIMFLOOR ESD	SIMFLOOR EPOXY SILOXANE	SHOP FLOOR
CHEMICAL	RESULTS	RESULTS	RESULTS	RESULTS	RESULTS	RESULTS	RESULTS
10% Acetic Acid	G	G	G	F	F	E	G
Vinegar	G	G	G	G	G	G	G
10% Citric Acid	G	G	G	G	G	G	G
10% Hydrochloric Acid	G	G	G	E	E	E	G
30% Hydrochloric Acid (muriatic)	G	G	G	E	E	E	G
10% Nitric Acid	NR	NR	G*	G	G	G	NR
50% Phosphoric Acid	F	F	F	G	G	G	F
10% Sulfuric Acid	F	F	G	F	F	G	F
37% Sulfuric Acid	F	F	F	F	F	G	F
70% Sulfuric Acid	F	F	F	F	F	G*	F
20% Ammonium Nitrate	E	E	E	E	E	E	E
20% Sodium Chloride	E	E	E	E	E	E	E
50% Sodium Hydroxide	G	G	E	E	E	E	G
Methyl Ethyl Ketone	E	E	G	E	E	E	E
Xylene	E	E	F	E	E	E	E
Ethylene Glycol	E	E	G	E	E	E	E
Isopropyl Alcohol	E	E	F	E	E	E	E
Mineral Spirits	F	F	E	E	E	E	F
Brake Fluid	E	E	F	G	G	G	E
Transmission Fluid	E	E	E	E	E	E	E
Motor Oil	E	E	E	E	E	E	E
50:1 Gas/Oil Mixture	E	E	E	E	E	E	E
E85 Gasoline	E	E	E	E	E	E	E
E95 Gasoline	E	E	E	E	E	E	E
Unleaded Gasoline	E	E	G	E	E	E	E
Skydrol	E	E	E	E	E	E	E
Betadine	E	E	G*	G*	G*	G*	E
Bleach	E	E	E	E	E	E	E
Urine	E	E	E	E	E	E	E
Coffee	E	E	E	E	E	E	E
Cola	E	E	E	E	E	E	E
Ketchup	E	E	G	F	F	E	E
Mustard	G*	G*	G	G	G	G*	G*
Red Wine	E	E	E	E	E	E	E

*Stain is only defect.

SIMIRON SYSTEMS	SIMCRETE SL	SIMCRETE SL FLAKE	SIMCRETE SL QUARTZ	SIMQUARTZ DB	SIMCRETE SL+TC	SIMFLOOR METALLIC
CHEMICAL	RESULTS	RESULTS	RESULTS	RESULTS	RESULTS	RESULTS
10% Acetic Acid	G	G	G	F	E	E
Vinegar	G	G	G	F	E	G
10% Citric Acid	G	G	G	E	E	G
10% Hydrochloric Acid	G	G	G	E	E	E
30% Hydrochloric Acid (muriatic)	G	G	G	E	E	E
10% Nitric Acid	NR	NR	NR	NR	G	G
50% Phosphoric Acid	F	F	F	NR	G	G
10% Sulfuric Acid	F	F	F	E	G	G
37% Sulfuric Acid	F	F	F	G	F	G
70% Sulfuric Acid	F	F	F	NR	NR	G*
20% Ammonium Nitrate	E	E	E	E	E	E
20% Sodium Chloride	E	E	E	E	E	E
50% Sodium Hydroxide	G	G	G	G	E	E
Methyl Ethyl Ketone	E	E	E	E	F	E
Xylene	E	E	E	E	E	E
Ethylene Glycol	E	E	E	E	E	E
Isopropyl Alcohol	E	E	E	E	E	E
Mineral Spirits	F	F	F	E	E	E
Brake Fluid	E	E	E	G	E	G
Transmission Fluid	E	E	E	E	E	E
Motor Oil	E	E	E	E	E	E
50:1 Gas/Oil Mixture	E	E	E	E	E	E
E85 Gasoline	E	E	E	E	E	E
E95 Gasoline	E	E	E	E	E	E
Unleaded Gasoline	E	E	E	E	E	E
Skydrol	E	E	E	E	E	E
Betadine	E	E	E	G*	E	G*
Bleach	E	E	E	E	E	E
Urine	E	E	E	E	E	E
Coffee	E	E	E	E	E	E
Cola	E	E	E	E	E	E
Ketchup	E	E	E	F	E	E
Mustard	G*	G*	G*	G	E	G*
Red Wine	E	E	E	E	E	E

*Stain is only defect.

KEY

E = Excellent

G = Good

F = Fair

NR = Not Recommend



SIMIRON.COM | SHOP.SIMIRON.COM

SIMIRON INC.
CORPORATE HEADQUARTERS
3000 Research Drive
Rochester Hills, MI 48309
(248) 686-3600

